

WAAS CH <b>77640</b> <b>W35A</b>	APP CRS <b>351°</b>	Rwy Idg TDZE Apt Elev	<b>8599</b> <b>1089</b> <b>1110</b>
--	------------------------	-----------------------------	---

RNAV (GPS) RWY 35

LAWTON-FORT SILL RGNL (LAW)

RNP APCH.

▼

For uncompensated Baro-VNAV systems, LNAV/VNAV NA below -11°C or above 54°C. For inop ALS, increase LNAV/VNAV all Cats visibility to ¾ SM.

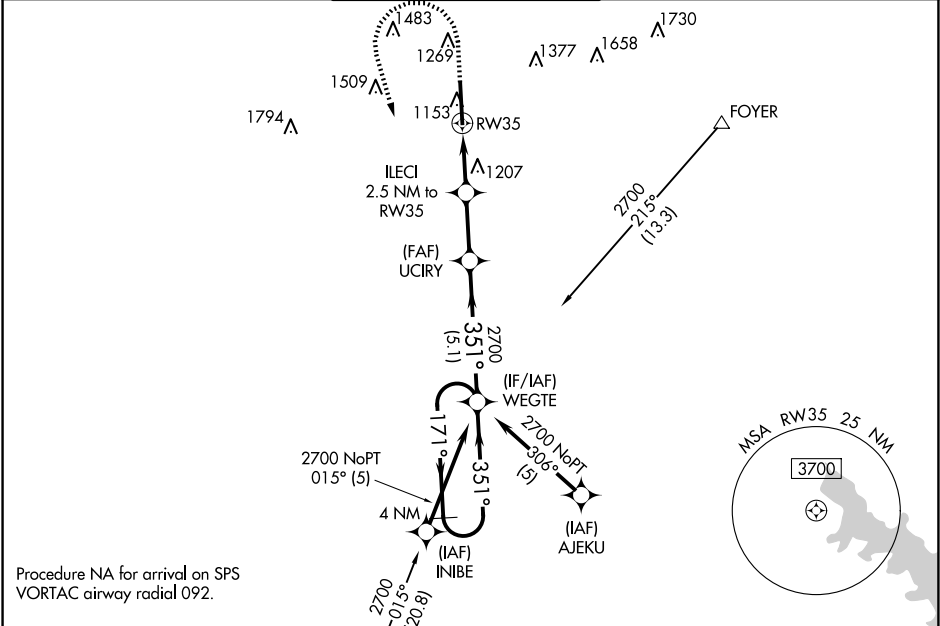
MALSR

A5

MISSED APPROACH:

(Do not exceed 200K until WEGTE) Climb to 1520 then climbing left turn to 2700 direct WEGTE and hold.

ATIS <b>120.75</b>	FORT SILL APP CON <b>120.55 322.4</b>	LAWTON TOWER ★ <b>119.9 (CTAF) 0 257.8</b>	GND CON <b>121.9</b>	UNICOM <b>122.95</b>
-----------------------	--	---	-------------------------	-------------------------



1520

2700

WEGTE

\*LNAV only.

ILECI 2.5 NM to RW35

\*1.2 NM to RW35

RW35

1.2 NM

1.3 NM

2.4 NM

5.1 NM

UCIRY 2700

WEGTE 351°

171°

2700

GP 3.00°

TCH 55

CATEGORY	A	B	C	D
LPV DA	1289-½	200 (200-½)		
LNAV/VNAV DA	1376-½	287 (300-½)		
LNAV MDA	1520-½	431 (500-½)	1520-¾	431 (500-¾)
CIRCLING	1620-1	510 (600-1)	1820-2 710 (800-2)	1820-2¼ 710 (800-2¼)

