

VORTAC DBQ	APP CRS	Rwy Idg	6502
115.8	304°	TDZE	1062
Chan 105		Apt Elev	1077

VOR RWY 31  
DUBUQUE RGNL (DBQ)

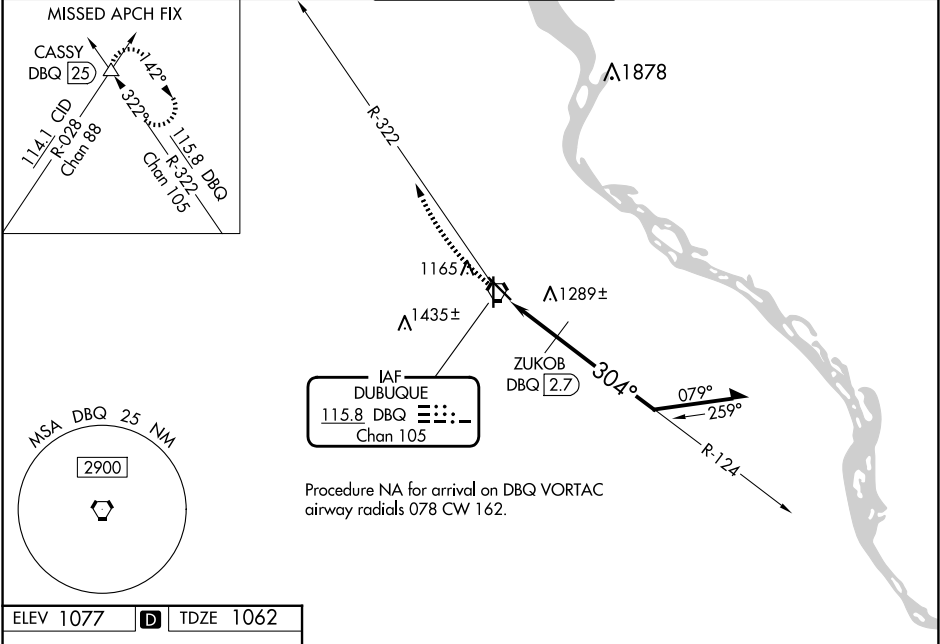
**V**

VOR minimums: For inop ALS, increase S-31 Cats C and D visibility to 2 SM.  
ZUKOB fix minimums: For inop ALS, increase S-31 Cats C and D visibility to 1½ SM.

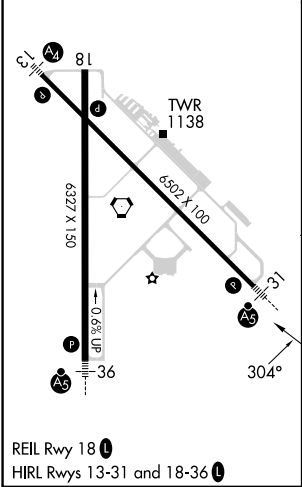
MALSR

MISSED APPROACH: Climbing right turn to 3500 on DBQ VORTAC R-322 to CASSY INT/ 25 DME and hold.

ATIS 127.25	CHICAGO CENTER 133.95 281.4	DUBUQUE TOWER ★ 119.5 (CTAF) 0 254.4	GND CON 121.8	UNICOM 122.95
----------------	--------------------------------	---	------------------	------------------



ELEV 1077	D	TDZE 1062
-----------	---	-----------



3500 CASSY

DBQ R-322

DBQ VORTAC

Remain within 10 NM

124°

2700

304°

1820\*

DBQ 1.9

ZUKOB DBQ 2.7

3.07°

TCH 57

1.3 NM

0.8 NM

CATEGORY	A	B	C	D
S-31	1820-½ 758 (800-½)	1820-¾ 758 (800-¾)	1820-1¾ 743 (800-2¼)	758 (800-1¾)
CIRCLING	1820-1 743 (800-1)	1820-1¼ 743 (800-1¼)	1820-2¼ 743 (800-2¼)	1820-2½ 743 (800-2½)
ZUKOB FIX MINIMUMS				
S-31	1540-½	478 (500-½)	1540-1	478 (500-1)
CIRCLING	1580-1 503 (600-1)	1600-1 523 (600-1)	1600-1½ 523 (600-1½)	1800-2 723 (800-2)

NC-3, 10 JUL 2025 to 07 AUG 2025

NC-3, 10 JUL 2025 to 07 AUG 2025