

WAAS CH 93700 W13A	APP CRS 132°	Rwy Idg TDZE Apt Elev	6502 1077 1077
--	------------------------	-----------------------------	---

RNAV (GPS) RWY 13

DUBUQUE RGNL (DBQ)

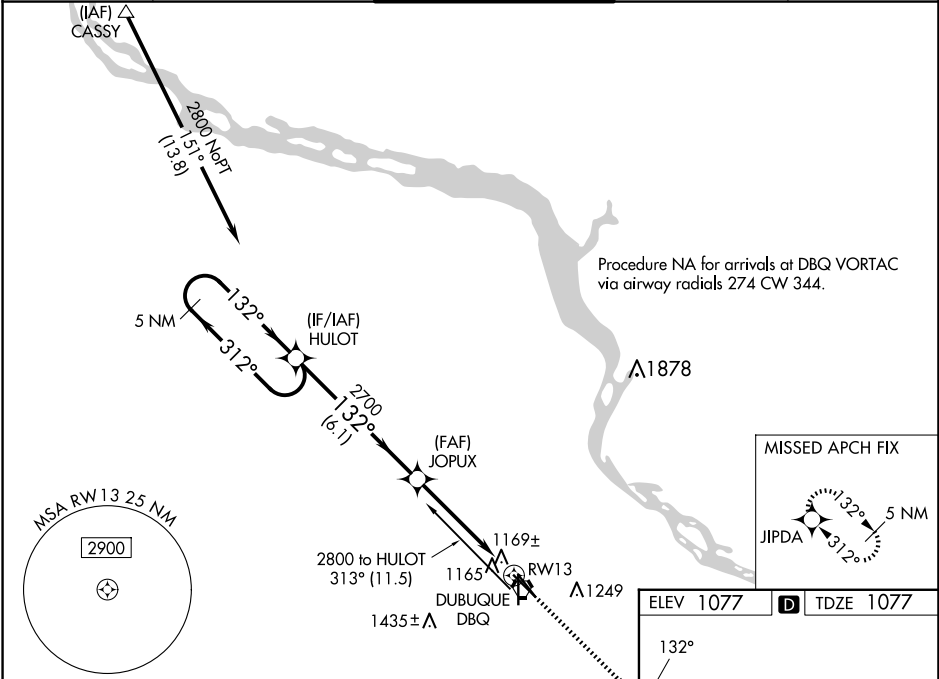
RNP APCH.

Inop table does not apply to LPV and LNAV/VNAV. Baro-VNAV NA when using Monticello altimeter setting. For uncompensated Baro-VNAV systems, LNAV/VNAV NA below -17°C or above 46°C. VDP NA when using Monticello altimeter setting. If local altimeter setting not received, use Monticello altimeter setting and increase all DAs/MDAs 100 feet.

MALS

MISSED APPROACH:
Climb to 3100 direct JIPDA and hold.

ATIS 127.25	CHICAGO CENTER 133.95 281.4	DUBUQUE TOWER ★ 119.5 (CTAF) 254.4	GND CON 121.8	UNICOM 122.95
-----------------------	---------------------------------------	--	-------------------------	-------------------------



5 NM Holding Pattern

HULOT

VGSI and RNAV glidepath not coincident (VGSI Angle 3.00/TCH 44).

JOPUX

2800

312°

132°

132°

2700

6.1 NM

3.9 NM

1 NM

1 NM

*1 NM to RW13

*RNAV only.

3100

JIPDA

CATEGORY	A	B	C	D
LPV DA	1393-1 316 (400-1)			
LNAV/VNAV DA	1574-1¾ 497 (500-1¾)			
LNAV MDA	1440-¾ 363 (400-¾)			1440-1¼ 363 (400-1¼)
CIRCLING	1580-1¾ 503 (600-1¾)		1600-1¾ 523 (600-1¾)	1800-2¼ 723 (800-2¼)

5 NM Holding Pattern

HULOT

VGSI and RNAV glidepath not coincident (VGSI Angle 3.00/TCH 44).

JOPUX

2800

312°

132°

132°

2700

6.1 NM

3.9 NM

1 NM

1 NM

*1 NM to RW13

*RNAV only.

3100

JIPDA

CATEGORY	A	B	C	D
LPV DA	1393-1 316 (400-1)			
LNAV/VNAV DA	1574-1¾ 497 (500-1¾)			
LNAV MDA	1440-¾ 363 (400-¾)			1440-1¼ 363 (400-1¼)
CIRCLING	1580-1¾ 503 (600-1¾)		1600-1¾ 523 (600-1¾)	1800-2¼ 723 (800-2¼)