

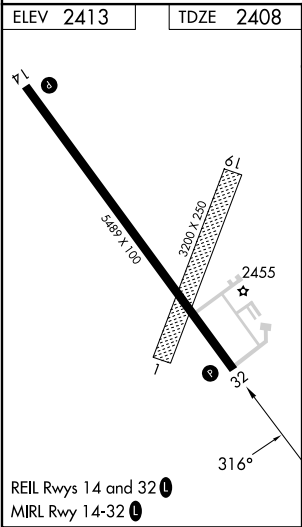
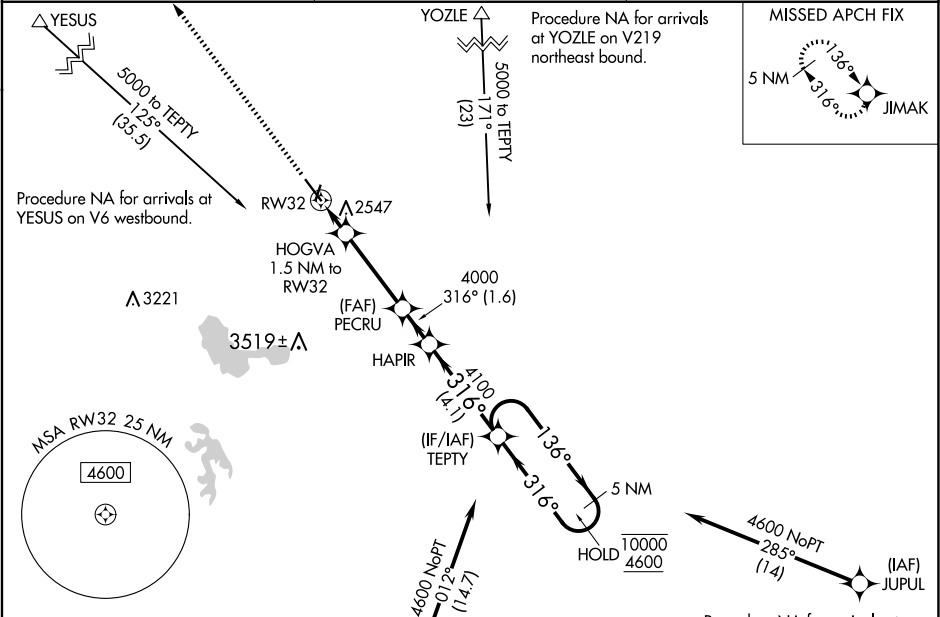
WAAS CH <b>49003</b> <b>W32A</b>	APP CRS <b>316°</b>	Rwy Idg TDZE <b>2408</b> Apt Elev <b>2413</b>
--	------------------------	---





RNAV (GPS) RWY 32

JIM KELLY FLD (LXN)

RNP APCH.	MISSED APPROACH: Climb to 4600 direct JIMAK and hold.
⚠ Circling NA to Rwys 1 and 19. Rwy 32 helicopter visibility reduction below ¾ SM NA. For uncompensated Baro-VNAV systems, LNAV/VNAV NA below -21°C or above 54°C.	

AWOS-3 <b>121.025</b>	DENVER CENTER <b>132.7 226.675</b>	UNICOM <b>123.0 (CTAF) 0</b>
--------------------------	---------------------------------------	---------------------------------



(IAF)  Procedure NA for arrivals at ZESOB on V220 westbound.		Procedure NA for arrivals at JUPUL on V220 northeast bound.		
4600 ↑	JIMAK 			
* LNAV only.	HOGVA 1.5 NM to RW32	PECRU 4000	HAPIR	
RW32 	2920*	4100	TEPTY	
1.5 NM	3.4 NM	1.6 NM	4.1 NM	
5 NM Holding Pattern		136° → 10000	← 316° 4600	
		GP 3.00° TCH 40		
CATEGORY	A	B	C	D
LPV DA	2658-1 250 (300-1)			
LNAV/ VNAV DA	2708-1 300 (300-1)			
LNAV MDA	2800-1 392 (400-1)		2800-1½ 392 (400-1½)	
 CIRCLING	2860-1 447 (500-1)	2940-1 527 (600-1)	2940-1½ 527 (600-1½)	2980-2 567 (600-2)