

KINGSVILLE, TEXAS

TACAN Y RWY 35R

TACAN NQI Chan <b>125</b>	APCH CRS <b>004°</b>	Rwy Idg <b>8000</b> TDZE <b>48</b> Arpt Elev <b>50</b>
------------------------------	-------------------------	--

[USN]

KINGSVILLE NAS (KNQI)



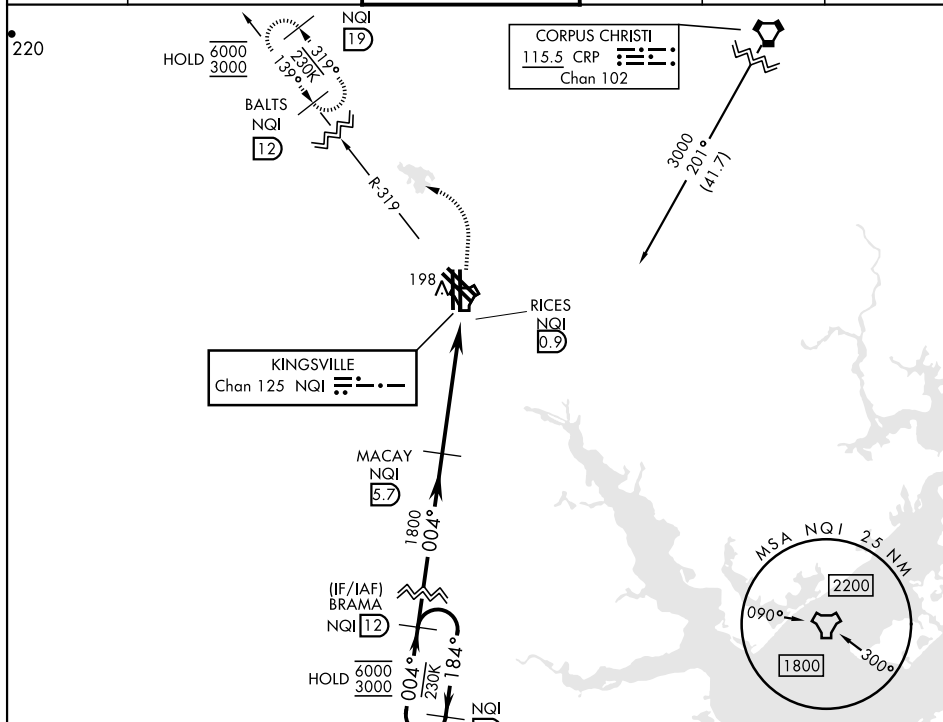
\* When ALS inop, increase vis to 1 mile.

ALSF-1

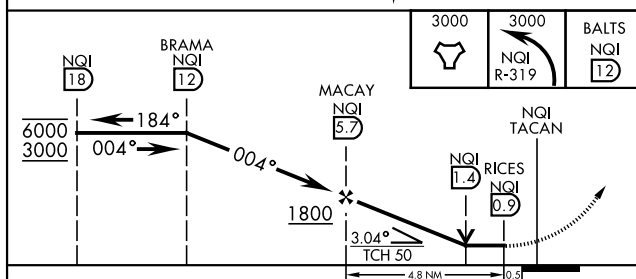


**MISSED APPROACH:** Climb to 3000 direct NQI TACAN and climbing left turn to intercept NQI R-319 to BALTS and hold. Continue climb-in-hold to 3000.

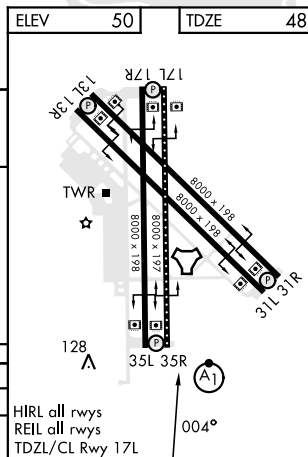
ATIS ★ 282.25	APP CON 119.9 290.45	TOWER ★ 124.1 377.05	GND CON 239.05	CLNC DEL 328.4	ASR/PAR
------------------	-------------------------	-------------------------	-------------------	-------------------	---------



EMERG SAFE ALT 100 NM 16,200



CATEGORY	A	B	C	D
S-35R *	420-1/2	372 (400-1/2)	420-3/4	372 (400-3/4)
<b>C</b> CIRCLING	540-1	490 (500-1)	760-2 710 (800-2)	760-2 1/4 710 (800-2 1/4)



KINGSVILLE, TEXAS

27°30'N-97°49'W

KINGSVILLE NAS (KNQI)

Orig 26DEC24

TACAN Y RWY 35R

SC-3, 10 JUL 2025 to 07 AUG 2025