

TACAN	NOG	APCH CRS	Rwy Idg	8000
Chan	63	146°	TDZE	49
			Arpt Elev	50

[USN]

KINGSVILLE NAS (KNQI)

TACAN Y RWY 17R

MISSED APPROACH: Climbing left turn to 1800, intercept NOG TACAN R-146 to CELUR and hold.

ATIS ★
282.25

APP CON
119.9 290.45

TOWER ★
124.1 377.05


GND CON
239.05

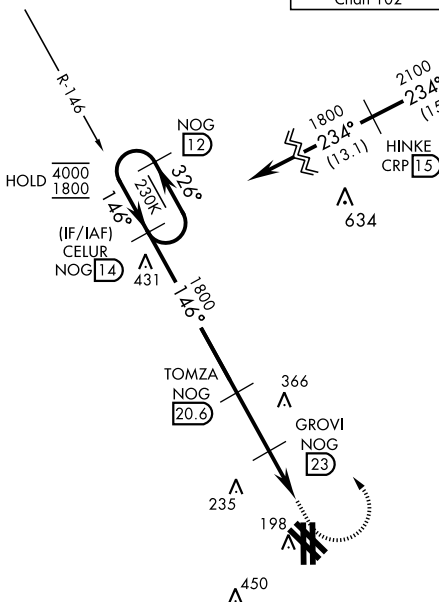
CLNC DE
328.4

ASR/PAR

489

ORANGE GROVE
Chan 63 NOG

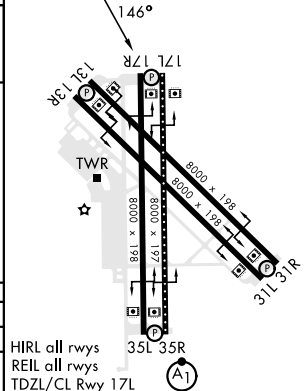
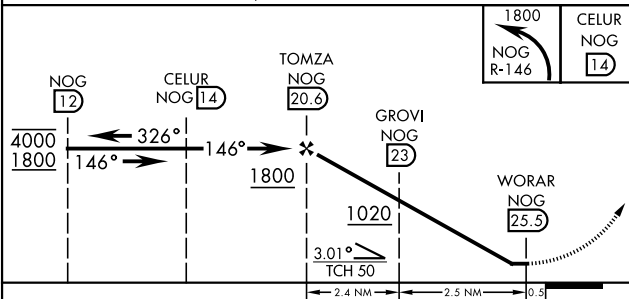
— IAF —
CORPUS CHRISTI
115.5 CRP 
Chan 102



MSA NOG 25 NM

EMERG SAFE ALT 100 NM 16,200

ELEV	50	TDZE	49
------	----	------	----



CATEGORY	A		B		C		D	
S-17R	520-1	471	(500-1)		520-1 $\frac{3}{8}$	471	(500-1 $\frac{3}{8}$)	
C CIRCLING	540-1	490	(500-1)		760-2 710 (800-2)		760-2 $\frac{1}{4}$ 710 (800-2 $\frac{1}{4}$)	

K|NGSV|LLE, TEXAS

27°30'N-97°49'W

KINGSVILLE NAS (KNQI)

Amdt 2 26DEC24

TACAN Y RWY 17R