

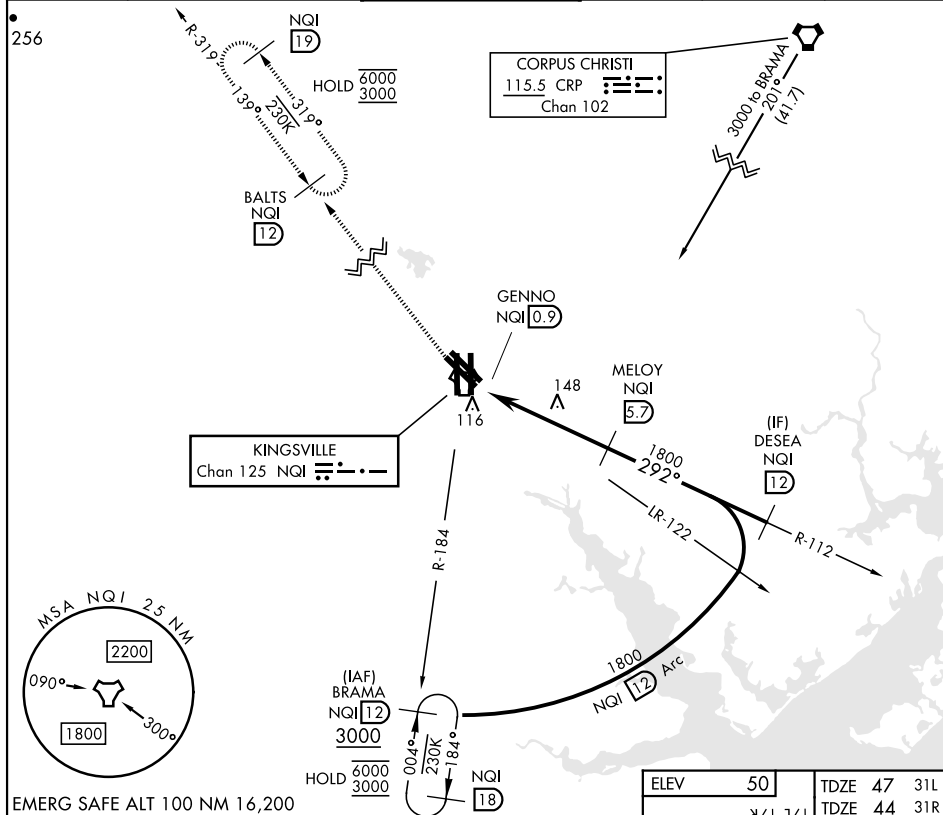
TACAN NQI Chan 125	APCH CRS 292°	Rwy 31L Idg 8000 TDZE 47 Arprt Elev 50	Rwy 31R Idg 8000 TDZE 44 Arprt Elev 50
------------------------------	-------------------------	---	---

[USN]

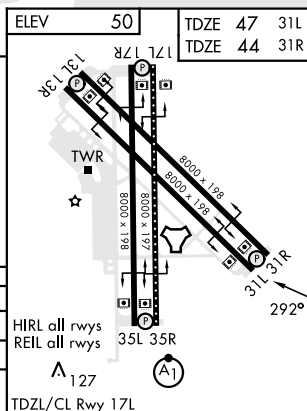
KINGSVILLE NAS (KNQI)

MISSED APPROACH: Climb to 3000 direct NQI TACAN and climbing right turn to intercept NQI R-319 to BALTS and hold. Continue climb-in-hold to 3000.

ATIS ★ 282.25	APP CON 119.9 290.45	TOWER ★ 124.1 377.05	GND CON 239.05	CLNC DEL 328.4	ASR/PAR
------------------	-------------------------	-------------------------	-------------------	-------------------	---------



CATEGORY	A	B	C	D
S-31L		380-1	333 (400-1)	
S-31R		380-1	336 (400-1)	
C CIRCLING	540-1 490 (500-1)		760-2 710 (800-2)	760-2¼ 710 (800-2¼)



KINGSVILLE, TEXAS

27°30'N-97°49'W

KINGSVILLE NAS (KNQI)

Amdt 2 26DEC24

TACAN RWY 31L/R

SC-3, 10 JUL 2025 to 07 AUG 2025