

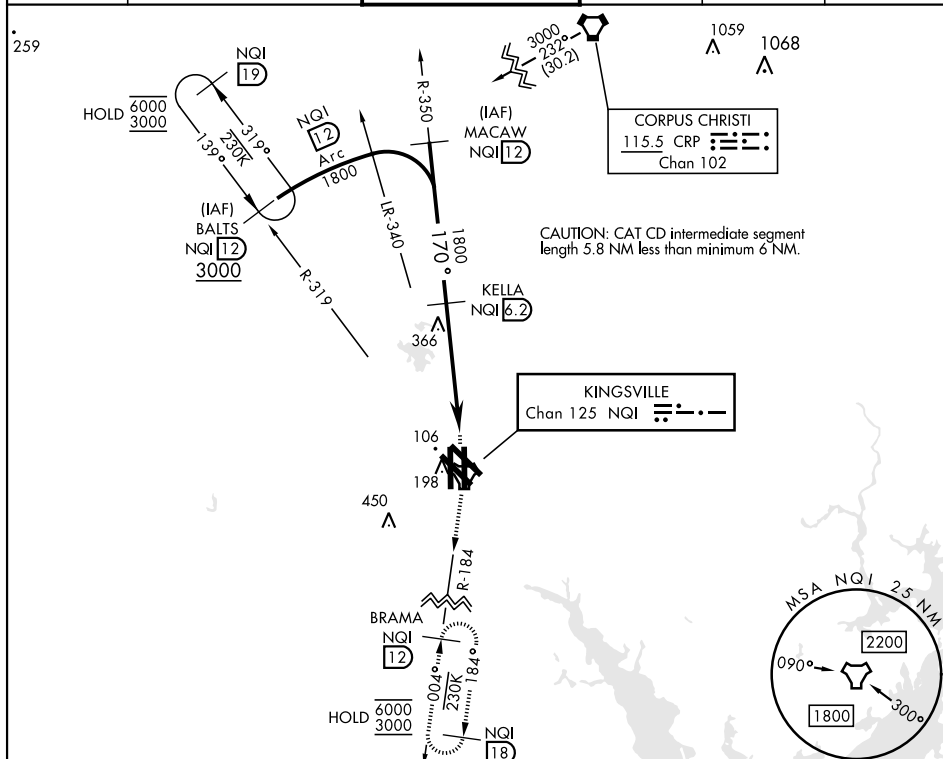
TACAN RWY 17L

TACAN NQI Chan <b>125</b>	APCH CRS <b>170°</b>	Rwy Idg <b>8000</b> TDZE <b>49</b> Arpt Elev <b>50</b>
------------------------------	-------------------------	--

[USN]

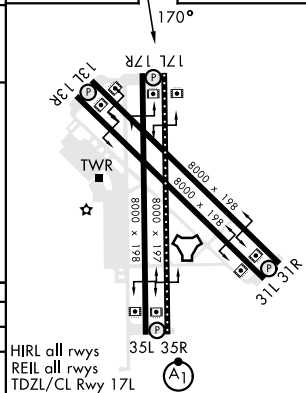
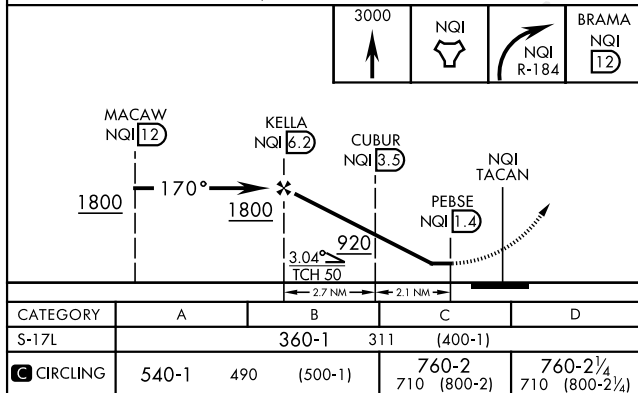
KINGSVILLE NAS (KNQI)

V				MISSED APPROACH: Climb to 3000 direct NQI TACAN and climbing right turn to intercept NQI R-184 to BRAMA and hold.			
ATIS ★ 282.25	APP CON 119.9 290.45		TOWER ★ 124.1 377.05		GND CON 239.05	CLNC DEL 328.4	ASR/PAR



EMERG SAFE ALT 100 NM 16,200

ELEV	50	TDZE	49
------	----	------	----



KINGSVILLE, TEXAS

27°30'N-97°49'W

KINGSVILLE NAS (KNQI)

Amdt 2 26DEC24

TACAN RWY 17L

SC-3, 10 JUL 2025 to 07 AUG 2025

SC-3, 10 JUL 2025 to 07 AUG 2025