

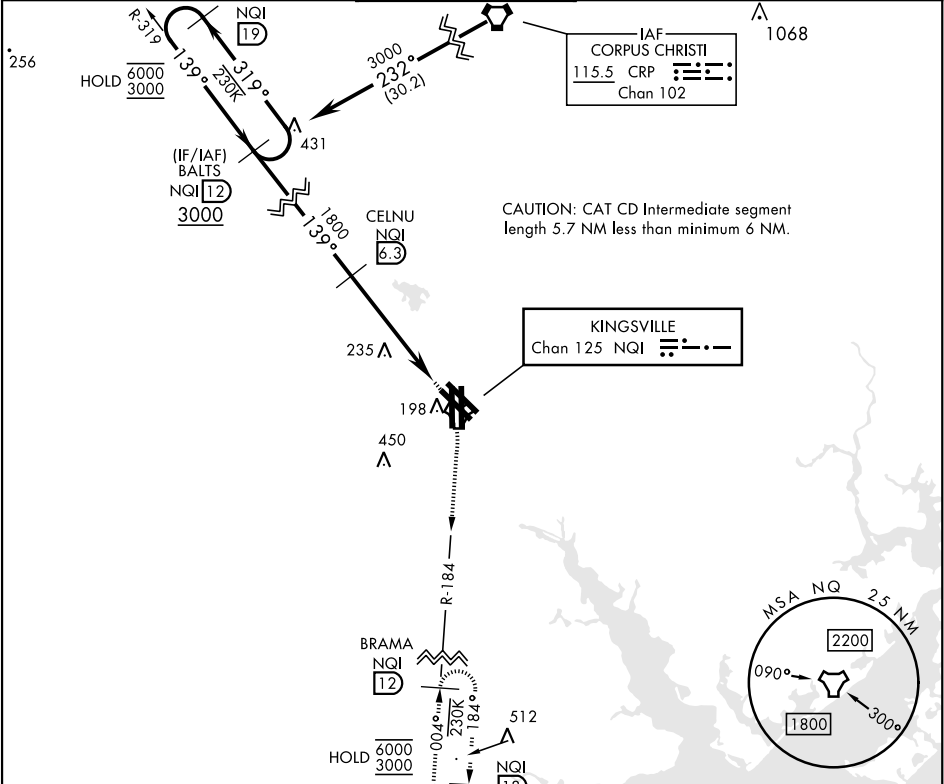
TACAN RWY 13L/R

TACAN	NQI	APCH CRS	Rwy 13L Idg	8000	Rwy 13R Idg	8000
Chan	125	139°	TDZE	49	TDZE	50
			Arpt Elev	50	Arpt Elev	50

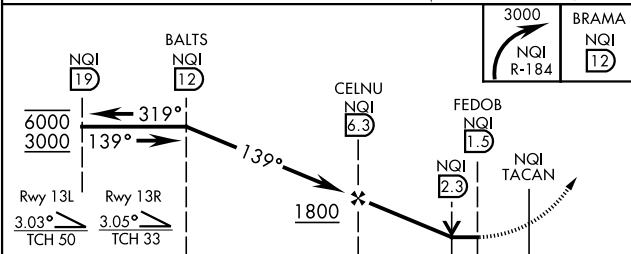
[USN] KINGSVILLE NAS (KNQI)

MISSED APPROACH: Climbing right turn to 3000 to intercept NQI TACAN R-184 to BRAMA and hold.

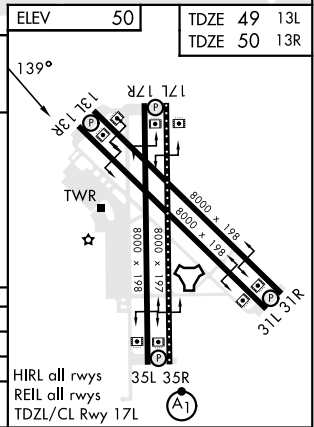
ATIS ★	APP CON	TOWER ★	GND CON	CLNC DEL	ASR/PAR
282.25	119.9 290.45	124.1 377.05	239.05	328.4	



EMERG SAFE ALT 100 NM 16,200



CATEGORY	A	B	C	D
S-13L	520-1	471 (500-1)	520-1 3/8	471 (500-1 3/8)
S-13R	520-1	470 (500-1)	520-1 3/8	470 (500-1 3/8)
CIRCUING	540-1	490 (500-1)	760-2 7/10 (800-2)	710 (800-2 1/4)



TACAN RWY 13L/R

SC-3, 10 JUL 2025 to 07 AUG 2025

SC-3, 10 JUL 2025 to 07 AUG 2025