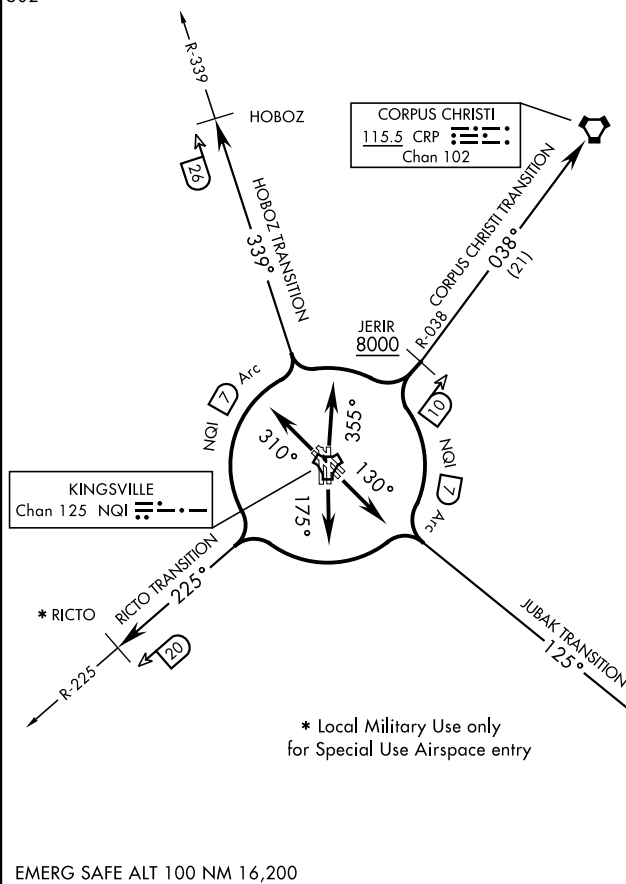


ATIS★	282.25
CLNC DEL	328.4
GND CON	239.05
★TOWER	
124.1	377.05
DEP CON	
121.05	266.8



EMERG SAFE ALT 100 NM 16,200

TAKEOFF RWY 13L/R: Climb via heading 130° to join NQI TACAN 7 DME arc, thence...

TAKEOFF RWY 17L/R: Climb via heading 175° to join NQI TACAN 7 DME arc, thence...

TAKEOFF RWY 31L/R: Climb via heading 310° to join NQI TACAN 7 DME arc, thence...

TAKEOFF RWY 35L/R: Climb via heading 355° to join NQI TACAN 7 DME arc, thence...

Rwys 13L/R and 17L/R: ...turn left to intercept NQI 7 DME arc and arc NE. Turn right to intercept NQI R-038 to cross JERIR at or above 8000. Then on NQI R-038 to CRP VORTAC.

Rwys 31L/R and 35L/R: ...turn right to intercept NQI 7 DME arc and arc NE. Turn left to intercept NQI R-038 to cross JERIR at or above 8000. Then on NQI R-038 to CRP VORTAC.

KINGSVILLE, TEXAS  
KINGSVILLE NAS (KNQI)