

KINGSVILLE, TEXAS

ILS Z or LOC Z RWY 13R

LOC/DME I-NQI 110.9 Chan 46	APCH CRS 130°	Rwy Idg 8000 TDZE 50 Arpt Elev 50
---	-------------------------	--

[USN]

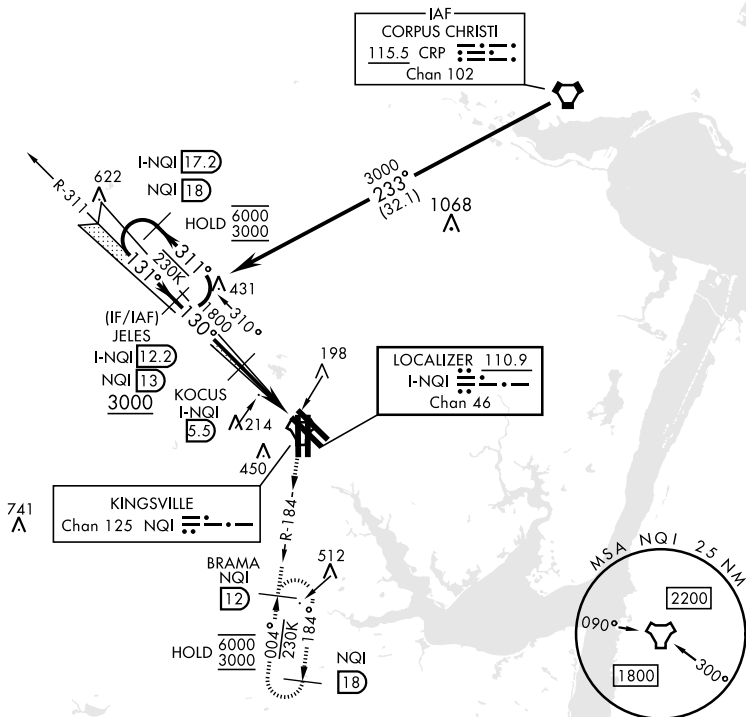
KINGSVILLE NAS (KNQI)

TACAN required

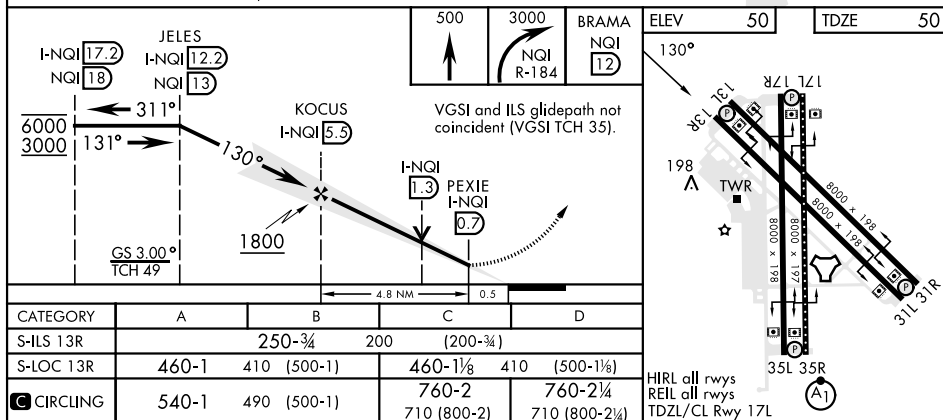
MISSED APPROACH: Climb to 500 then climbing right turn to 3000 and intercept NQI TACAN R-184 to BRAMA and hold.

ATIS ★ 282.25	APP CON 119.9 290.45	TOWER ★ 124.1 377.05	GND CON 239.05	CLNC DEL 328.4	ASR/ PAR
------------------	-------------------------	-------------------------	-------------------	-------------------	-------------

686



EMERG SAFE ALT 100 NM 16.200



KINGSVILLE, TEXAS

27°30'N-97°49'W

KINGSVILLE NAS (KNQI)

Orig 26DEC24

ILS Z or LOC Z RWY 13R

SC-3, 10 JUL 2025 to 07 AUG 2025

SC-3, 10 JUL 2025 to 07 AUG 2025