

ILS X or LOC X RWY 13R

LOC I-NQI
110.9

APCH CRS
130°

Rwy Idg
TDZE
Arpt Elev
8000
50
50

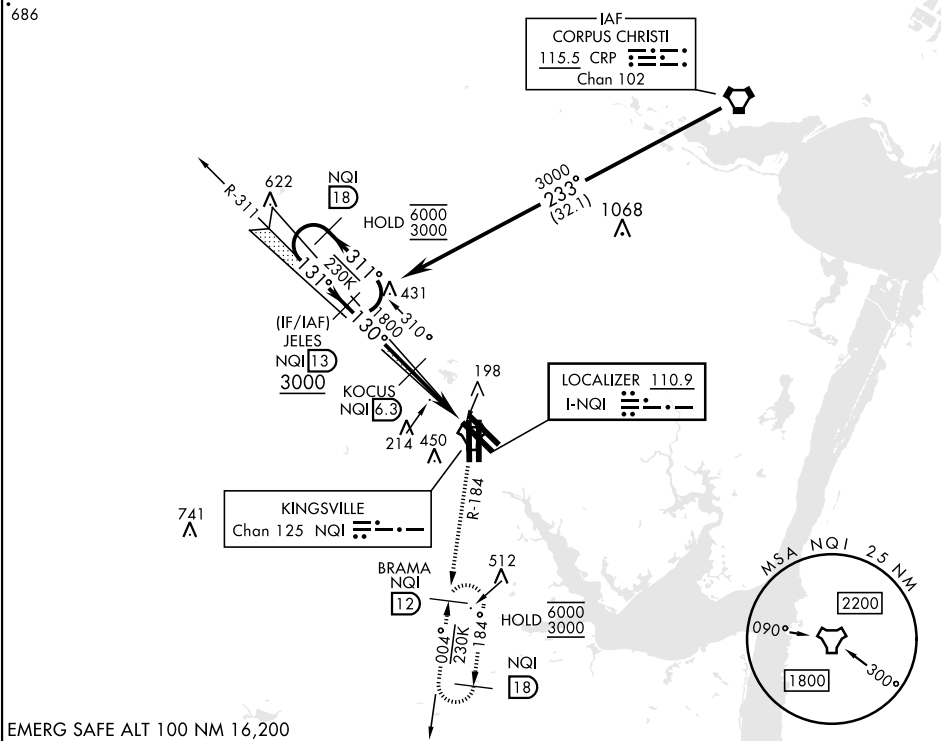
[USN]

KINGSVILLE NAS (KNQI)

TACAN required

MISSED APPROACH: Climb to 500 then climbing right turn to 3000 to intercept NQI TACAN R-184 to BRAMA and hold.

ATIS★ 282.25	APP CON 119.9 290.45	TOWER★ 124.1 377.05	GND CON 239.05	CLNC DEL 328.4	ASR/ PAR
------------------------	--------------------------------	-------------------------------	--------------------------	--------------------------	-------------



EMERG SAFE ALT 100 NM 16,200

VGSI and ILS glidepath not coincident (VGSI TCH 35).

500

3000

BRAMA NQI 12

NQI 18

JELES NQI 13

KOCUS NQI 6.3

NQI 2.1

PEXIE NQI 1.5

6000

3000

GS 3.00°

TCH 49

1800

4.8 NM

0.5

CATEGORY	A	B	C	D
S-ILS 13R	250-¾	200	(200-¾)	
S-LOC 13R	460-1	410 (500-1)	460-1½	410 (500-1½)
CIRCLING	540-1	490 (500-1)	710 (800-2)	710 (800-2½)

HIRL all rwys

REIL all rwys

TDZL/CL Rwy 17L

35L 35R

A1

ELEV 50

TDZE 50

130°

171 17R

171 17L

198

TWR

8000 × 128

8000 × 128

8000 × 128

8000 × 128

31L 31R

ILS X or LOC X RWY 13R

SC-3, 10 JUL 2025 to 07 AUG 2025

SC-3, 10 JUL 2025 to 07 AUG 2025