

TACAN NQI Chan 125	APCH CRS 004°	Rwy Idg 8000 TDZE 48 Arpt Elev 50
------------------------------	-------------------------	--------------------------------------------------------------

HI-TACAN Z RWY 35R

KINGSVILLE NAS (KNQI)

[USN]

* When ALS inop, increase CAT CDE vis to 1 mile.

ALSF-1

MISSED APPROACH: Climb to 3000 direct NQI TACAN and climbing left turn to intercept NQI R-319 to BALTS and hold. Continue climb-in-hold to 3000.

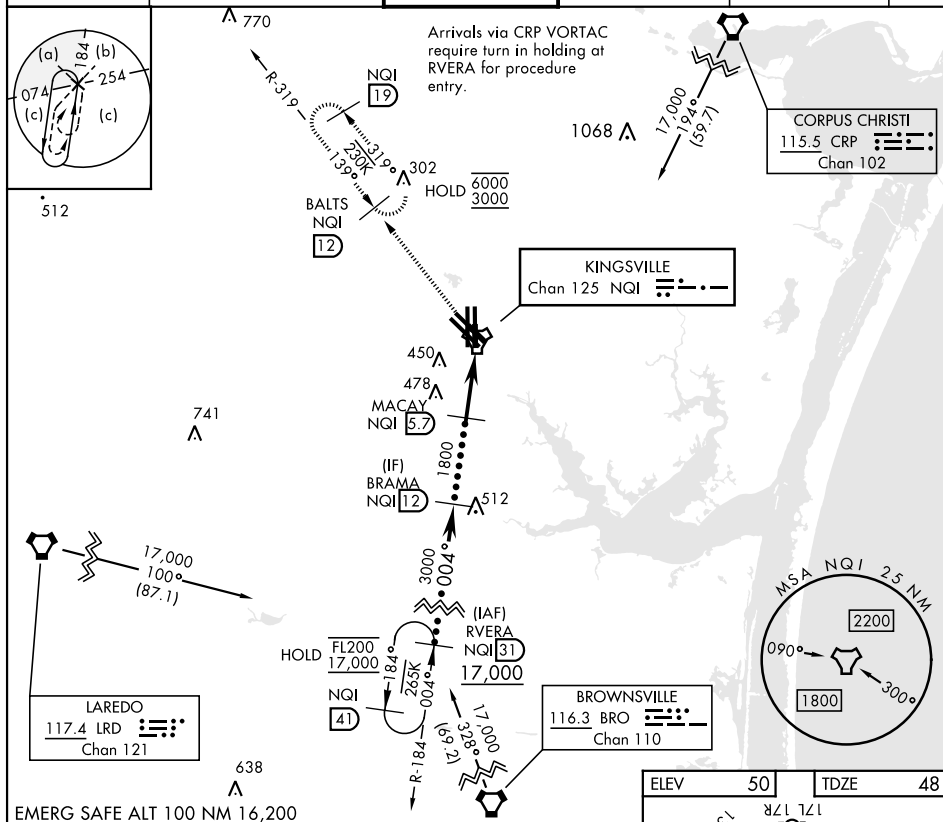
ATIS ★
282.25

APP CON
119.9 290.45

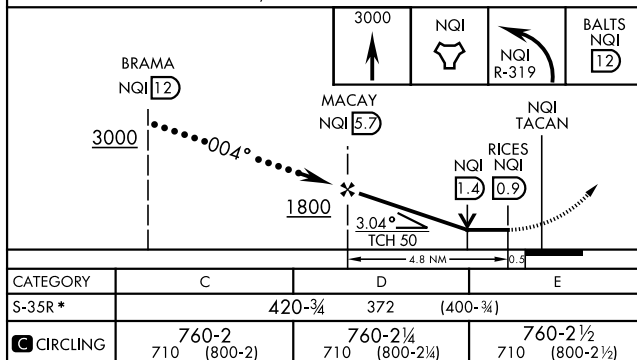
TOWER ★
124.1 377.05

GND CON
239.05

CLNC DE
328.4

ASR/
PAR

EMERG SAFE ALT 100 NM 16,200



KINGSVILLE, TEXAS

27°30'N-97°49'W

KINGSVILLE NAS (KNQI)

Orig 26DEC24

HI-TACAN Z RWY 35R

SC-3, 10 JUL 2025 to 07 AUG 2025

SC-3, 10 JUL 2025 to 07 AUG 2025