

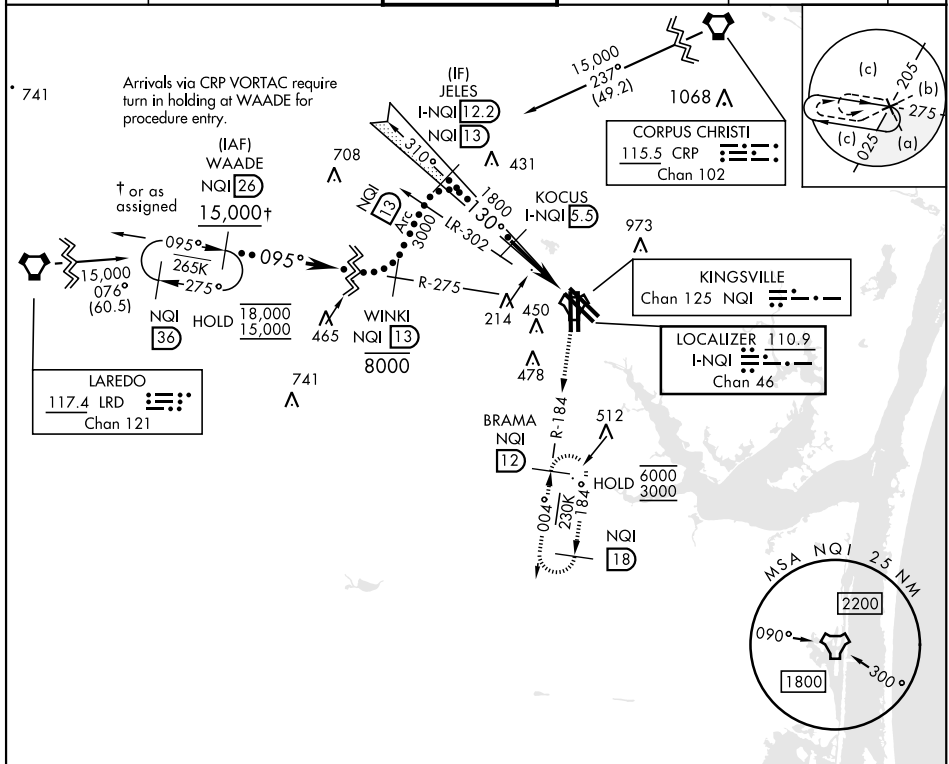
HI-ILS Y or LOC Y RWY 13R

LOC/DME I-NQI 110.9 Chan 46	APCH CRS 130°	Rwy Idg 8000 TDZE 50 Arpt Elev 50	[USN]	KINGSVILLE NAS (KNQI)
---	-------------------------	--	-------	-----------------------

TACAN required

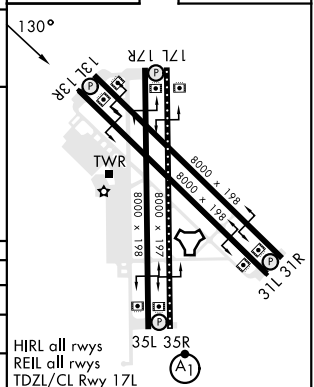
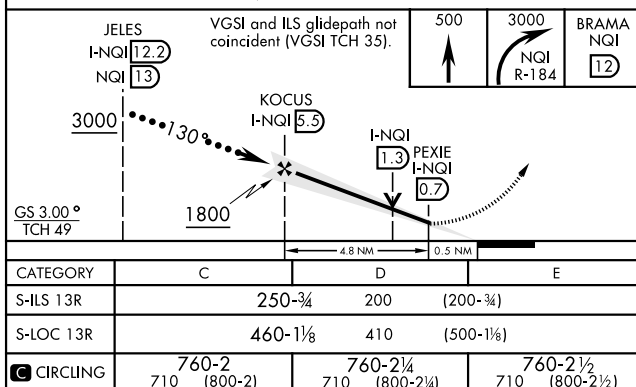
MISSED APPROACH: Climb to 500 then climbing right turn to 3000 and intercept NQI TACAN R-184 to BRAMA and hold.

ATIS ★ 282.25	APP CON 119.9 290.45	TOWER ★ 124.1 377.05	GND CON 239.05	CLNC DEL 328.4	ASR/ PAR
------------------	-------------------------	-------------------------	-------------------	-------------------	-------------



EMERG SAFE ALT 100 NM 16,200

ELEV	50		TDZE	50
------	----	--	------	----



KINGSVILLE, TEXAS

27°30'N-97°49'W

KINGSVILLE NAS (KNQI)

HI-ILS Y or LOC Y RWY 13R