

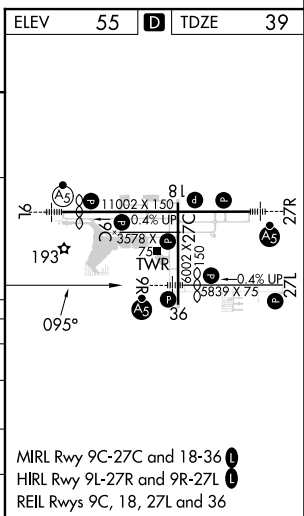
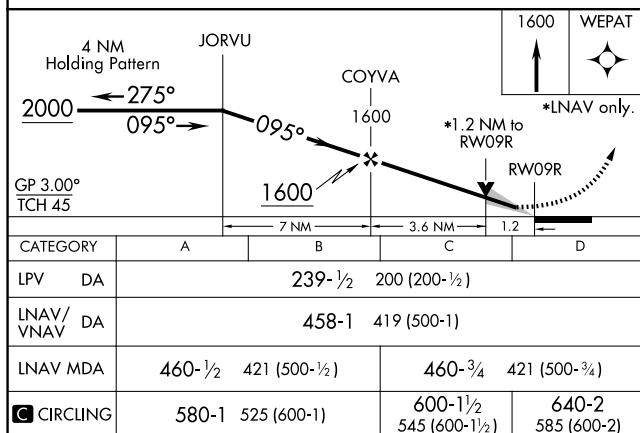
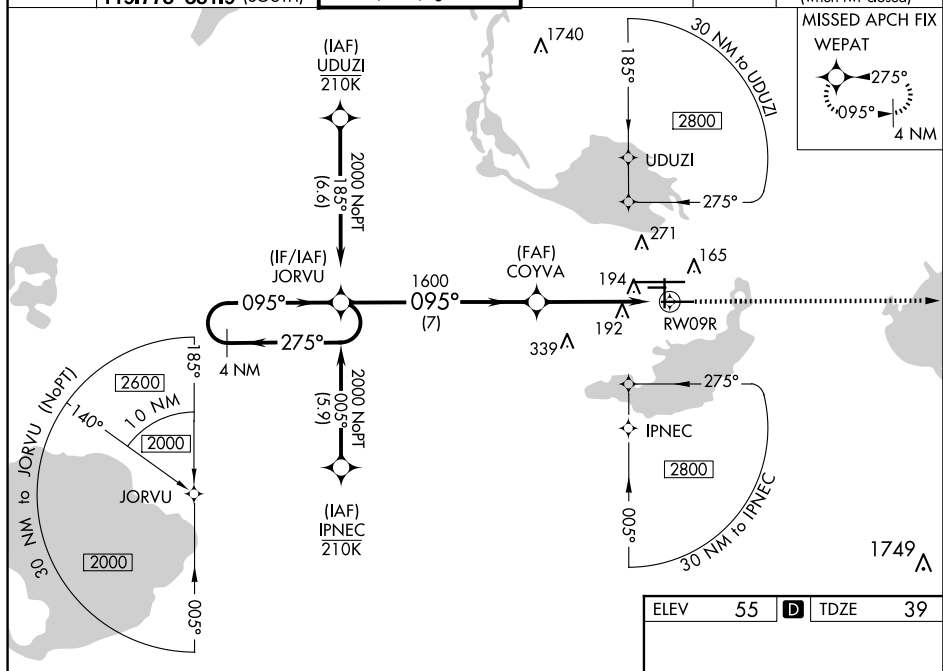
RNAV (GPS) RWY 9R
ORLANDO SANFORD INTL (SFB)

V For uncompensated Baro-VNAV systems, LNAV/VNAV NA below 0° C or above 54° C. Baro-VNAV and VDP NA when using Exec altimeter setting. When local altimeter setting not received, use Exec altimeter setting and increase LPV DA to 282, LNAV/VNAV DA to 501 and all MDA 60 feet; increase LNAV/VNAV all Cats visibilities $\frac{1}{8}$ SM and LNAV Cat C/D visibility $\frac{1}{4}$ SM. Night landing: Rwy 27C NA.



MISSED APPROACH: Climb to 1600 direct WEPAT and hold.

CLNC DEL
121.35
(when twr closed)



SE-3, 10 JUL 2025 to 07 AUG 2025

SE-3 10 JUL 2025 to 07 AUG 2025