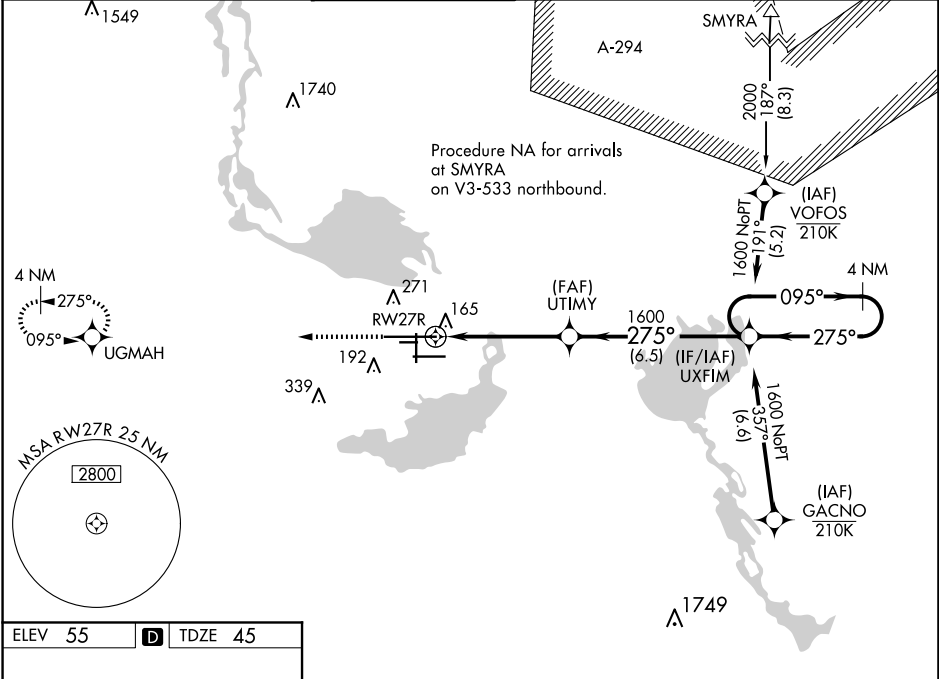


WAAS CH 63209 W27A	APP CRS 275°	Rwy Idg 11002 TDZE 45 Apt Elev 55
--	------------------------	--

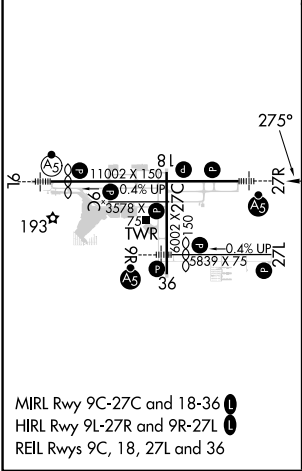
RNAV (GPS) RWY 27R
ORLANDO SANFORD INTL (SF'B)



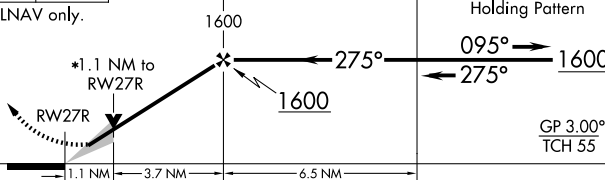

<p>▼</p> <p>For uncompensated Baro-VNAV systems, LNAV/VNAV NA below 0°C (32°F) or above 54°C (130°F). DME/DME RNP-0.3 NA. For inop ALS, increase LNAV/VNAV all Cats visibility to 1¼ SM, increase LNAV Cat C/D visibility to 1 SM.</p>	<p>MALSR</p> <p>A5</p>	<p>MISSED APPROACH: Climb to 2000 direct UGMAH and hold.</p>
--	------------------------	--

ATIS 125.975	ORLANDO APP CON 135.3 351.9 (NORTH) 119.775 351.9 (SOUTH)	SANFORD TOWER★ 120.3(CTAF) 0 254.35	GND CON 121.35 254.35	CLNC DEL 123.975	CLNC DEL 121.35 (when twr closed)
------------------------	---	---	---------------------------------	----------------------------	--



ELEV 55	D	TDZE 45
----------------	----------	----------------



2000	UGMAH	VGSI and RNAV glidepath not coincident [VGSI Angle 3.00/TCH 72].			
					
*LNAV only.					
					
CATEGORY		A	B	C	D
LPV DA		245-½		200 (200-½)	
LNAV/ VNAV DA		425-⅞		380 (400-⅞)	
LNAV MDA		420-½ 375 (400-½)		420-⅝ 375 (400-⅝)	
 CIRCLING		580-1 525 (600-1)		600-1½ 545 (600-1½)	640-2 585 (600-2)

SE-3, 10 JUL 2025 to 07 AUG 2025

SE-3, 10 JUL 2025 to 07 AUG 2025