

LOC/DME I-OOS 111.55 Chan 52 (Y)	APP CRS 095°	Rwy ldg 5000 TDZE 39 Apt Elev 55
--	------------------------	---

ILS or LOC RWY 9R
ORLANDO SANFORD INTL (SF'B)

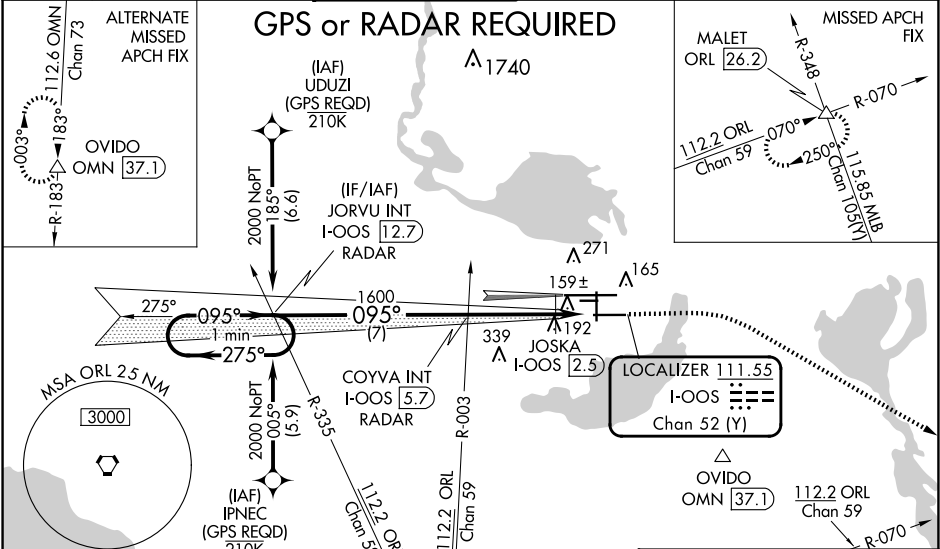
⚠ When local altimeter setting not received, use Exec altimeter setting and increase S-ILS DA to 282, and all MDA 60 feet; increase S-LOC 9R Cat C, D visibility ¼ mile, Circling Cat C visibility ⅓ mile and JOSKA Fix Minimums S-LOC 9R Cats C, D visibility ¼ mile. Simultaneous approach authorized with Rwy 9L. Night landing: Rwy 27C NA.

MALSRL

A5

MISSED APPROACH: Climb to 500 then climbing right turn to 2800 on heading 125° and ORL VORTAC R-070 to MALET INT/ORL 26.2 DME and hold.

ATIS 125.975	ORLANDO APP CON 135.3 351.9 (NORTH) 119.775 351.9 (SOUTH)	SANFORD TOWER★ 120.3 (CTAF) 0 254.35	GND CON 121.35 254.35	CLNC DEL 123.975	CLNC DEL 121.35 (When twr closed)
------------------------	---	---	---------------------------------	----------------------------	--



One Minute Holding Pattern		JORVU INT I-OOS 12.7 RADAR	COYVA INT I-OOS 5.7 RADAR	500	2800	ORL R-070	MALET
2000 ← 275° 095° →		1600	1600	* 600 when using Exec altimeter setting.			
GS 3.00° TCH 45		1600	JOSKA I-OOS 2.5	I-OOS 0.9			
		7 NM	3.2 NM	1.6 NM			
CATEGORY	A	B	C	D			
S-ILS 9R	239-1/2 200 (200-1/2)						
S-LOC 9R	540-1/2 501 (500-1/2)		540-1 501 (500-1)				
CIRCLING	580-1 525 (600-1)		600-1 1/2 545 (600-1/2)		640-2 585 (600-2)		
JOSKA FIX MINIMUMS (DME REQUIRED)							
S-LOC 9R	440-1/2 401 (400-1/2)		440-3/4 401 (400-3/4)				
CIRCLING	580-1 525 (600-1)		600-1 1/2 545 (600-1/2)		640-2 585 (600-2)		

ELEV 55 D TDZE 39

MIRL Rwy 9C-27C and 18-36 L
HIRL Rwy 9L-27R and 9R-27L L
REIL Rwys 9C, 18, 27L and 36

FAF to MAP 4.8 NM

Knots	60	90	120	150	180
Min:Sec	4:48	3:12	2:24	1:55	1:30