

ILS or LOC RWY 9L
ORLANDO SANFORD INTL (SFB)

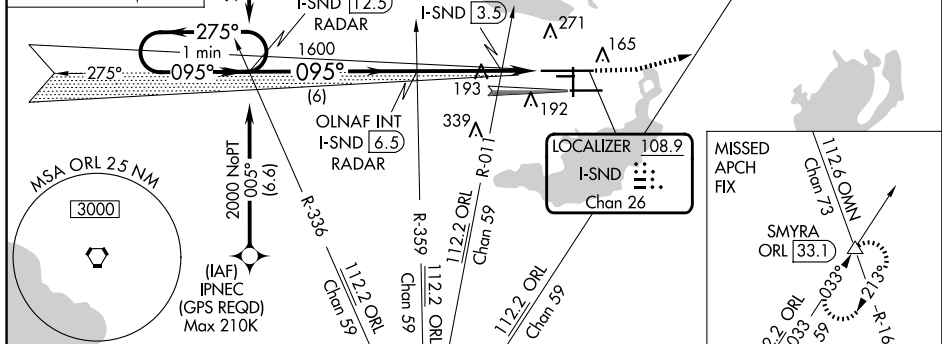
MALSR

MISSED APPROACH: Climb to 500 then climbing left turn to 2000 on heading 080° and ORL VORTAC R-033 to SMYRA INT/ORL 33.1 DME and hold.

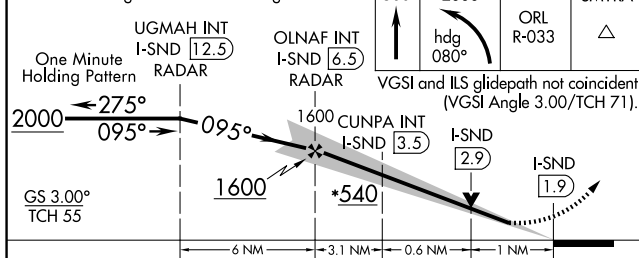
(IAF)
UDUZI
(GPS REQD)
Max 210K

GPS or RADAR
REQUIRED

TIKUY
OMN 26

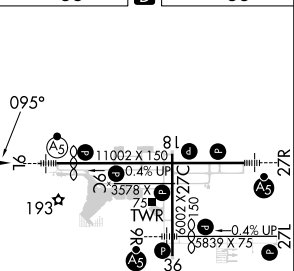




*600 when using Exec altimeter setting.



CATEGORY	A	B	C	D
S-ILS 9L	255-½ 200 (200-½)			
S-LOC 9L	540-½ 485 (500-½)		540-1 485 (500-1)	
CIRCLING	580-1 525 (600-1)		600-1½ 545 (600-1½)	640-2 585 (600-2)
	CUNPA FIX MINIMUMS (DUAL VOR RECEIVER OR DME REQUIRED)			
S-LOC 9L	460-½ 405 (500-½)		460-¾ 405 (500-¾)	
CIRCLING	580-1 525 (600-1)		600-1½ 545 (600-1½)	640-2 585 (600-2)

ELEV	55		TDZE	55
------	----	---	------	----



MIRL Rwy 9C-27C and 18-36 
HIRL Rwy 9L-27R and 9R-27L 
REIL Rwy 9C, 18, 27L and 36

FAF to MAP 4.7 NM

Knots	60	90	120	150	180
Min:Sec	4:42	3:08	2:21	1:53	1:34