

TACAN RWY 32

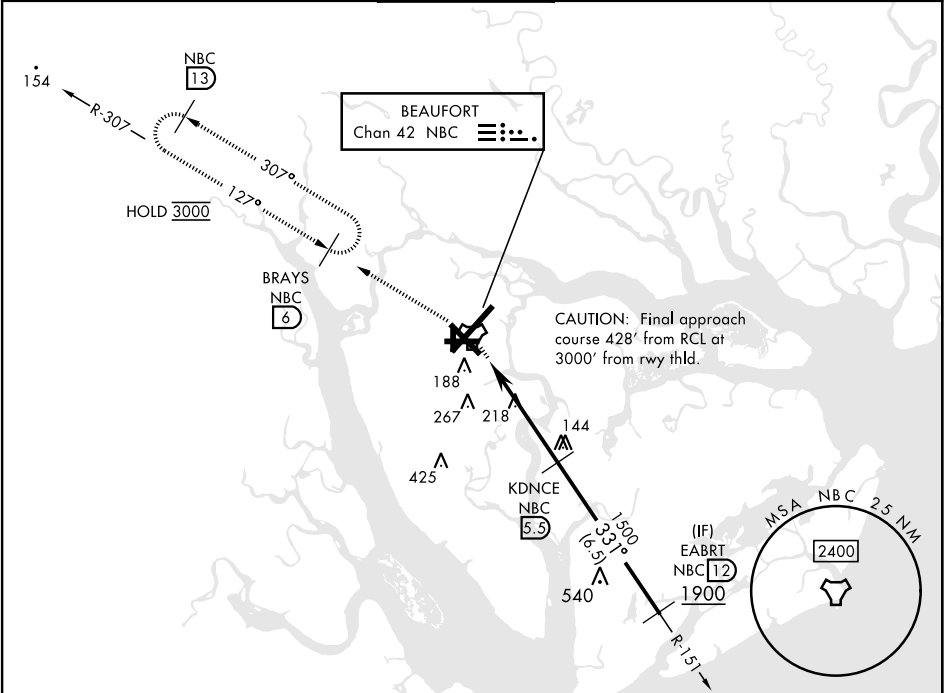
TACAN	NBC	APCH CRS	Rwy Idg	8000
Chan	42	331°	TDZE	25
			Arpt Elev	37

[USN]

BEAUFORT MCAS (MERRITT FLD) (KNBC)

MISSED APPROACH: Climb to 3000 on NBC TACAN R-307 to BRAYS and hold. Continue climb in hold to 3000.

ATIS★	APP CON	TOWER★	GND CON	CLNC DEL	ASR/PAR
279.525	125.125 292.125 (ABV 3000) 123.7 269.125 (3000 and BLW)	119.05 342.875	128.15 348.625	128.15 254.375	



ELEV	37	TDZE	25
------	----	------	----

EMERG SAFE ALT 100 NM 3100

VGSI and descent angles
not coincident
(VGSI Angle 3.00/TCH 41).

3000 NBC R-307

BRAYS NBC 6

EABRT NBC 12

KDNCE NBC 5.5

NBC 1.9

NBC 1.1

BULRN NBC 1.1

NBC TACAN

1500

1900

331°

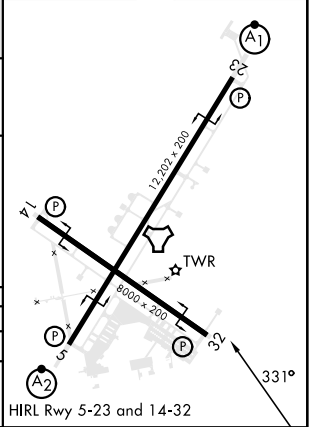
2.77°

TCH 41

0.5

4.4 NM

CATEGORY	A	B	C	D	E
S-32	480-1 455 (500-1)		480-1½ 455 (500-1½)		
CIRCLING	560-1 523 (600-1)		580-1½ 543 (600-1½)	600-2 563 (600-2)	740-2½ 703 (800-2½)



TACAN RWY 32

SE-2, 10 JUL 2025 to 07 AUG 2025

SE-2, 10 JUL 2025 to 07 AUG 2025