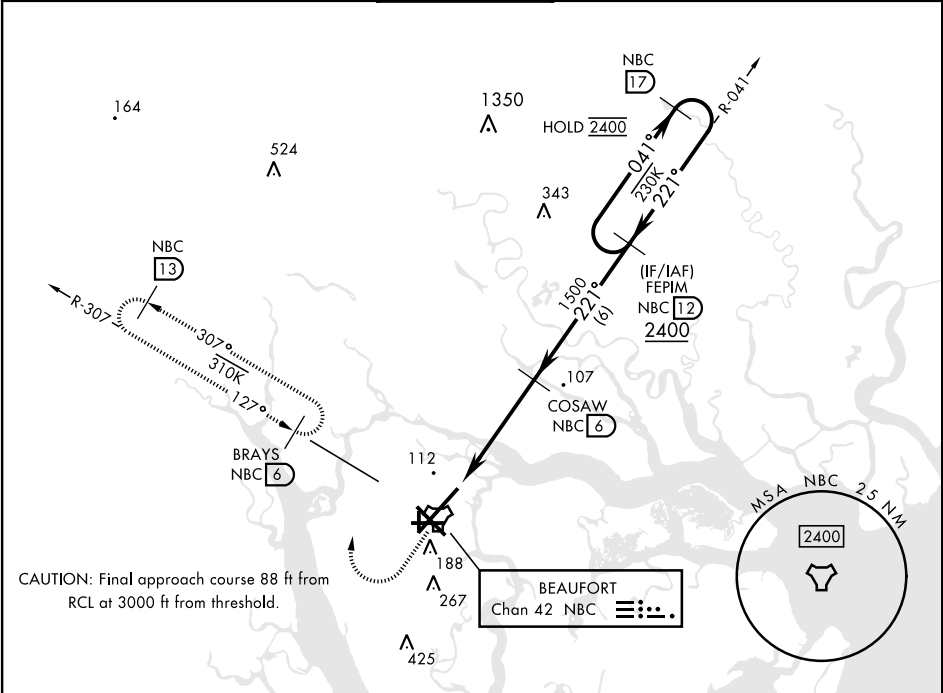


TACAN RWY 23

TACAN NBC Chan 42	APCH CRS 221°	Rwy Idg 12,202 TDZE 16 Arpt Elev 37	[USN]	BEAUFORT MCAS (MERRITT FLD) (KNBC)		
RADAR required			ALSIF-1 A1	MISSED APPROACH: Climb to 500, then climbing right turn to 3000, join NBC TACAN R-307 direct BRAYS and hold. Continue climb in hold to 3000.		
*When ALS inop, increase vis to 1 mile.						
ATIS ★ 279.525	APP CON 125.125 292.125 (ABV 3000) 123.7 269.125 (3000 and BLW)		TOWER ★ 119.05 342.875	GND CON 128.15 348.625	CLNC DEL 128.15 254.375	ASR/PAR



EMERG SAFE ALT 100 NM 3100						ELEV 37	TDZE 16
500	3000	BRAYS NBC 6					
↑	NBC R-307						
NBC TACAN	WEMSA NBC 1.7	COSAW NBC 6					
NBC 2.2							
0.5	4.3 NM						
CATEGORY	A	B	C	D	E		
S-23 *	380-½ 364 (400-½)		380-¾ 364 (400-¾)				
CIRCLING	560-1 523 (600-1)		580-1½ 543 (600-1½)	600-2 563 (600-2)	740-2½ 703 (800-2½)		

TACAN RWY 23

SE-2, 10 JUL 2025 to 07 AUG 2025

SE-2, 10 JUL 2025 to 07 AUG 2025