
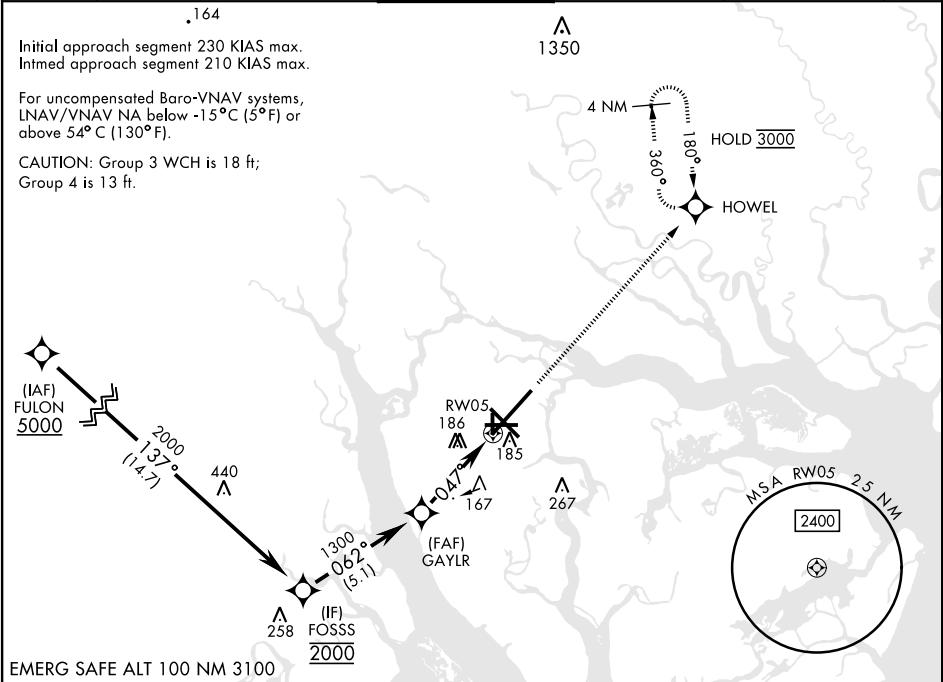

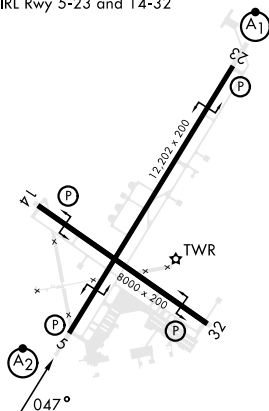


RNAV (GPS) RWY 5

WAAS Chan <b>90095</b> <b>W05A</b>		APCH CRS <b>047°</b>	Rwy ldg <b>12,202</b> TDZE <b>37</b> Arpt Elev <b>37</b>	[UN]	BEAUFORT MCAS (MERRITT FLD) (KNBC)		
RNP APCH				SALSF <div><div>A2</div><div></div></div>	MISSED APPROACH: Climb to 3000 direct HOWEL and hold, continue climb-in-hold to 3000.		
RADAR required ▼ * When ALS inop, increase vis to 1 mile. ** When ALS inop, increase CAT AB vis to 1 mile, CAT CD to 1½ miles.							
ATIS ★ <b>279.525</b>	APP CON <b>125.125 292.125</b> (ABV 3000) <b>123.7 269.125</b> (3000 and BLW)		TOWER★ <b>119.05 342.875</b>		GND CON <b>128.15 348.625</b>	CLNC DEL <b>128.15 254.375</b>	ASR/ PAR



<div>FULON</div> <div>5000</div>				<div>FOSSS</div> <div>2000</div>				<div>GAYLR</div> <div>1300</div>				<div>1.1 NM to RW05</div> <div>3.9 NM</div>				<div>3000</div> <div>↑</div>		<div>HOWEL</div> <div></div>		<div>ELEV 37</div>		<div>TDZE 37</div>	
<div>GP 3.00 °</div> <div>TCH 38</div>																							
CATEGORY		A			B			C			D												
LPV DA		237-¾			200			(200-¾)															
LNAV/ * VNAV DA		409-¾			372			(400-¾)															
LNAV MDA		420-¾ 383 (400-¾)			420-7/8 383 (400-7/8)																		
CIRCLING		560-1 523 (600-1)			580-1½ 543 (600-1½)			600-2 563 (600-2)															



RNAV (GPS) RWY 5

SE-2, 10 JUL 2025 to 07 AUG 2025

SE-2, 10 JUL 2025 to 07 AUG 2025