


ILS or LOC Z RWY 23

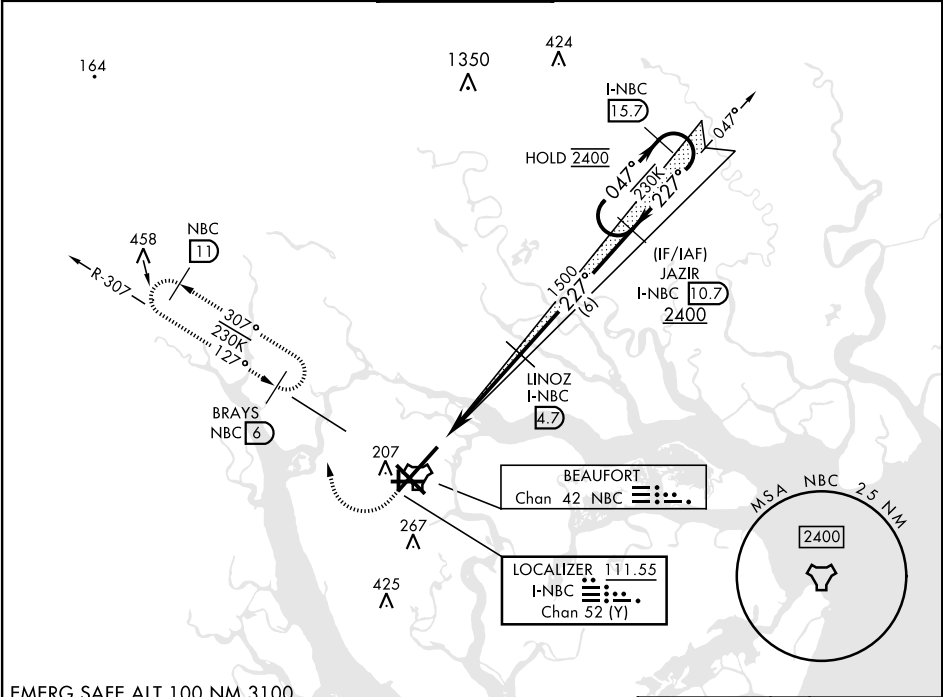
LOC/DME I-NBC <b>111.55</b> Chan <b>52 (Y)</b>	APCH CRS <b>227°</b>	Rwy Idg <b>12,202</b> TDZE <b>16</b> Arpt Elev <b>37</b>
--	-------------------------	--

[USN]

BEAUFORT MCAS (MERRITT FLD) (KNBC)

RNAV or RADAR required for missed approach.	ALSIF-1 	MISSED APPROACH: Climb to 500, then climbing right turn to 3000, join NBC TACAN R-307 direct BRAYS and hold. Continue climb in hold to 3000.
---	--	--

ATIS ★ <b>279.525</b>	APP CON <b>125.125 292.125</b> (ABV 3000) <b>123.7 269.125</b> (3000 and BLW)	TOWER ★ <b>119.05 342.875</b>	GND CON <b>128.15 348.625</b>	CLNC DEL <b>128.15 254.375</b>	ASR/PAR
--------------------------	---	----------------------------------	----------------------------------	-----------------------------------	---------



500 ↑	3000 NBC R-307	BRAYS NBC 6	JAZIR I-NBC 10.7	I-NBC 15.7	ELEV 37 HIRL Rwy 5-23 and 14-32	TDZE 16
OSYDA I-NBC 0.6	I-NBC 1.4	LINOZ I-NBC 4.7	227° 2400	047° 2400	227° 2400	227°
0.5	4 NM	1500	GS 3.00° TCH 43			
CATEGORY	A	B	C	D	E	
S-ILS 23*	216-½		200	(200-½)		
S-LOC 23**	460-½	444 (500-½)	460-7/8	444 (500-7/8)		
CIRCLING	560-1	523 (600-1)	580-1½ 543 (600-1½)	600-2 563 (600-2)	740-2½ 703 (800-2½)	

ILS or LOC Z RWY 23

SE-2, 10 JUL 2025 to 07 AUG 2025

SE-2, 10 JUL 2025 to 07 AUG 2025