



BEAUFORT, SOUTH CAROLINA

25051

HI-TACAN Z RWY 23

TACAN	NBC	APCH CRS	Rwy Idg
Chan 42	221°	12,202	16
		TDZE	37
		Arpt Elev	

[USN]

BEAUFORT MCAS (MERRITT FLD) (KNBC)

When ALS inop, increase vis to 1 mile.

ALSF-1

A1

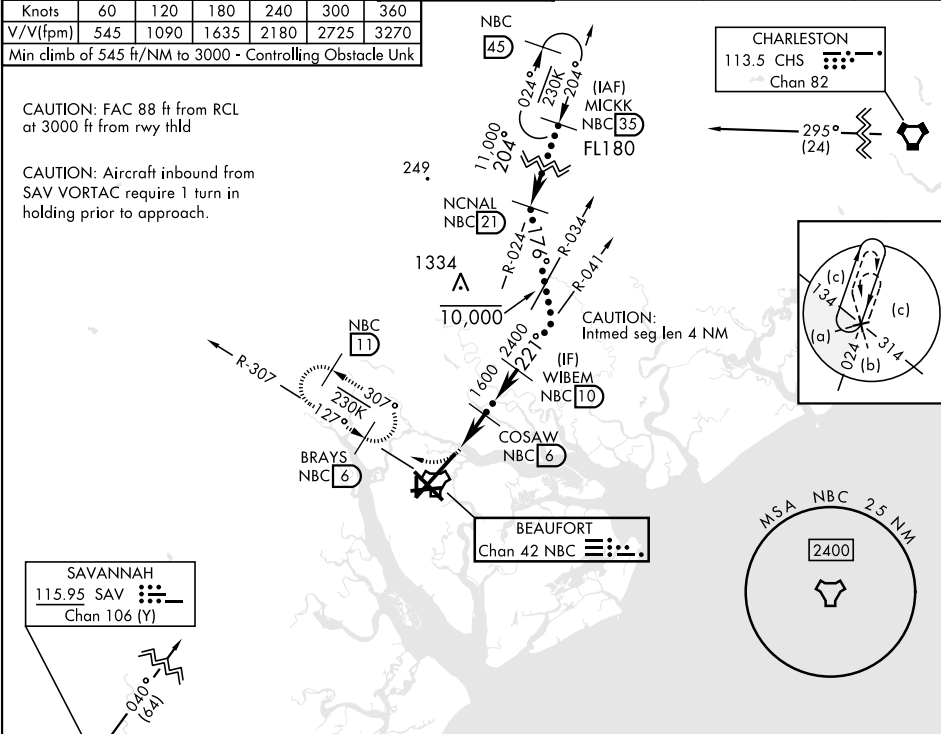
MISSED APPROACH: Climb to 500, then climbing right turn to 3000, intercept NBC TACAN R-307 direct BRAYS and hold.

ATIS ★	APP CON	TOWER ★	GND CON	CLNC DEL	ASR/PAR
279.525	(ABV 3000) 125.125 292.125 3000 and BLW) 123.7 269.125	119.05 342.875	128.15 348.625	128.15 254.375	

Knots	60	120	180	240	300	360
V/V(fpm)	545	1090	1635	2180	2725	3270
Min climb of 545 ft/NM to 3000 - Controlling Obstacle Unk						

CAUTION: FAC 88 ft from RCL at 3000 ft from rwy thld

CAUTION: Aircraft inbound from SAV VORTAC require 1 turn in holding prior to approach.

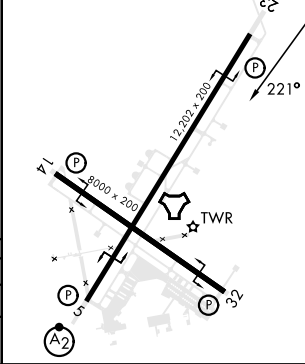


EMERG SAFE ALT 100 NM 3100

500	3000	BRAYS NBC 6	
↑	NBC R-307		
NBC TACAN	NBC 2.2	COSAW NBC 6	
WEMSA NBC 1.7		WIBM NBC 10	
		2400	
		221°	
	3.03° TCH 43	1600	
	4.3 NM		
CATEGORY	C	D	E
S-23 *	380-¾	364	(400-¾)
CIRCLING	580-1½ 543 (600-1½)	600-2 563 (600-2)	740-2 ½ 703 (800-2½)

ELEV 37	TDZE 16
---------	---------

HIRL Rwy 5-23 and 14-32



BEAUFORT, SOUTH CAROLINA

32°29'N-80°43'W

BEAUFORT MCAS (MERRITT FLD) (KNBC)

Amtd 4 11JUL24

HI-TACAN Z RWY 23



SE-2, 10 JUL 2025 to 07 AUG 2025

SE-2, 10 JUL 2025 to 07 AUG 2025