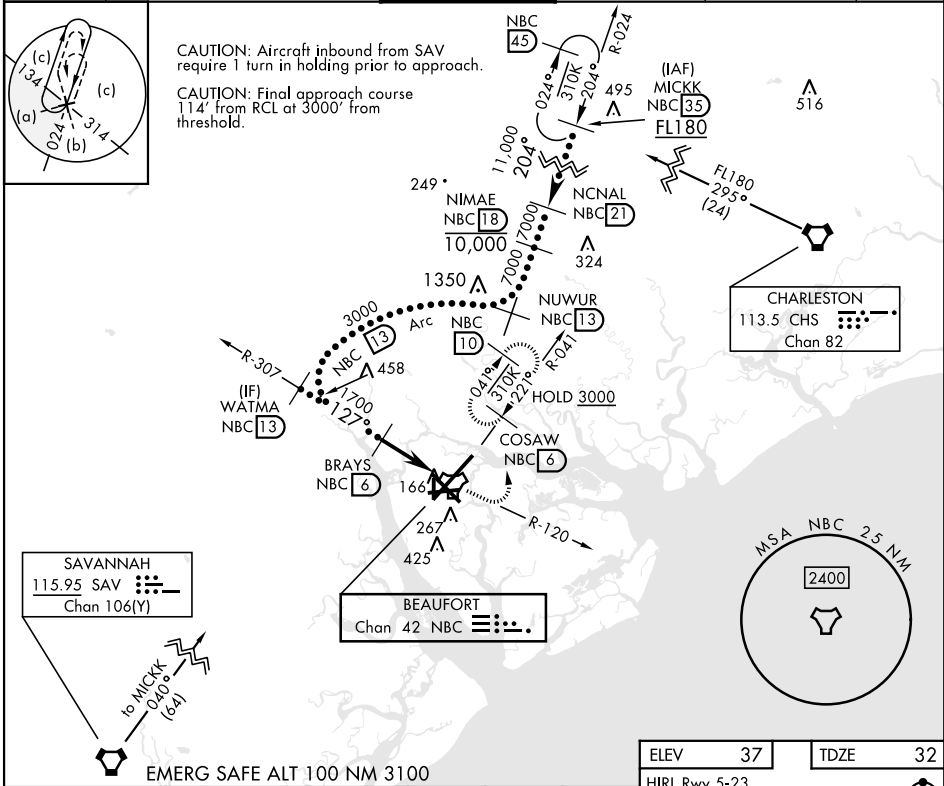


HI-TACAN Z RWY 14

TACAN NBC Chan 42		APCH CRS 127°		Rwy Ldg 8000 TDZE 32 Arprt Elev 37	[USN]	BEAUFORT MCAS (MERRITT FLD) (KNBC)					
RADAR required				MISSED APPROACH: Climb to 1600 on NBC TACAN R-120, then climbing left turn to 3000 via hdg 330° to intercept NBC R-041 to 6 DME (COSAW) and hold. Continue climb in hold to 3000.							
▼											
ATIS ★ 279.525		APP CON (ABV 3000) 125.125 292.125 (3000 and BLW) 123.7 269.125			TOWER ★ 119.05 342.875		GND CON 128.15 348.625		CLNC DEL 128.15 254.375		ASR/PAR



WATMA  
NBC 13

3000

127°

BRAYS  
NBC 6

1700

2.94°

TCH 40

4.5 NM

NBC TACAN

WUSAL  
NBC 1.5

0.7

1600  
NBC  
R-120

↑

3000  
hdg  
330°

↻

COSAW  
NBC  
6

6

CATEGORY	C	D	E
S-14	420-1½	388	(400-1½)
<b>C</b> CIRCLING	580-1½ 543 (600-1½)	600-2 563 (600-2)	740-2½ 703 (800-2½)

127°

14

8000 × 200

12/232 × 200

32

5

2

1

TWR

32

14

5

2

1

HI-TACAN Z RWY 14