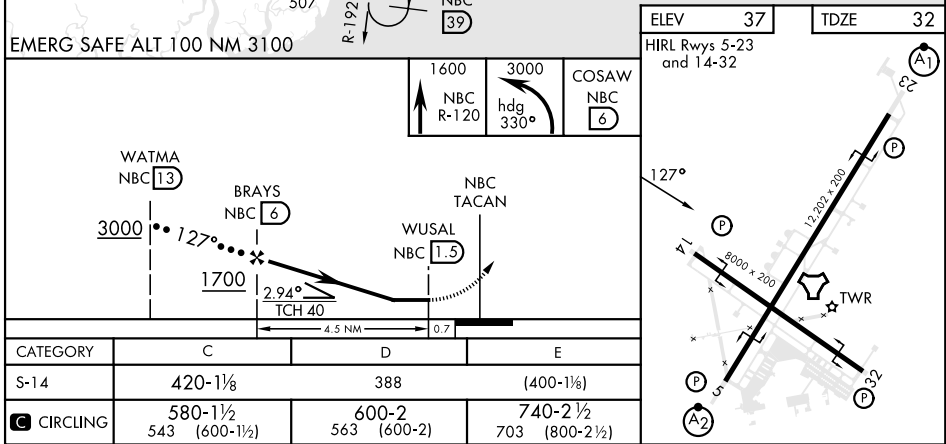
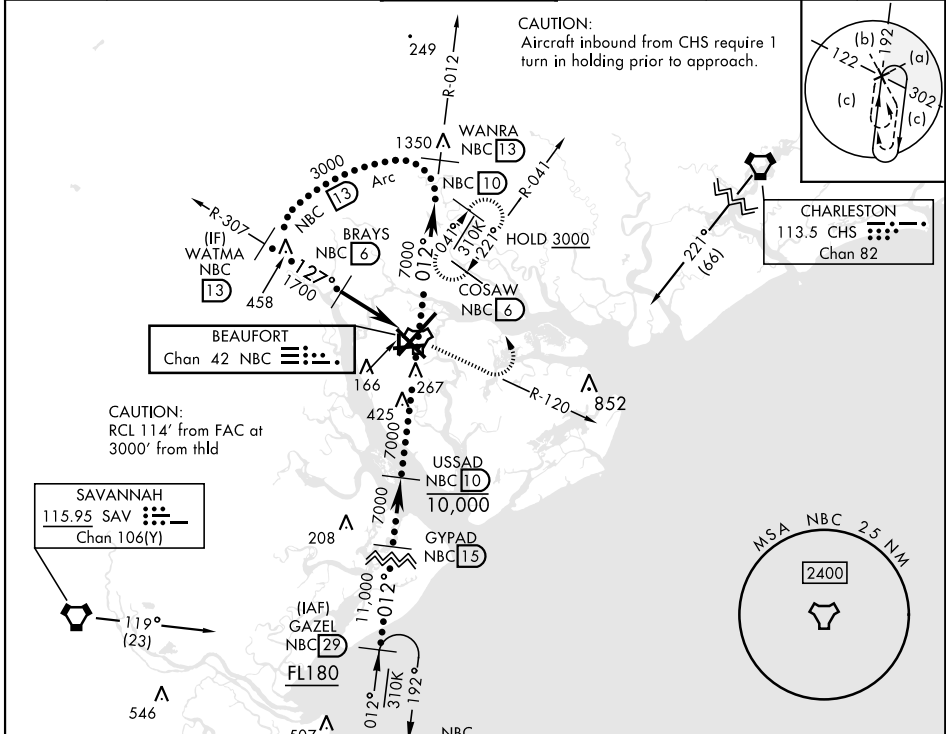


HI-TACAN Y RWY 14

TACAN NBC Chan 42		APCH CRS 127°	Rwy Idg 8000 TDZE 32 Arpt Elev 37	[USN]	BEAUFORT MCAS (MERRITT FLD) (KNBC)		
RADAR required ▼			MISSED APPROACH: Climb to 1600 on NBC TACAN R-120, then climbing left turn to 3000 via hdg 330° to intercept NBC R-041 to 6 DME (COSAW) and hold. Continue climb in hold to 3000.				
ATIS ★ 279.525	APP CON 125.125 292.125 (ABV 3000) 123.7 269.125 (3000 and BLW)		TOWER ★ 119.05 342.875	GND CON 128.15 348.625	CLNC DEL 128.15 254.375	ASR/PAR	



HI-TACAN Y RWY 14