

HI-TACAN X RWY 23

TACAN NBC Chan <b>42</b>	APCH CRS <b>221°</b>	Rwy ldg <b>12,202</b> TDZE <b>16</b> Arpt Elev <b>37</b>
-----------------------------	-------------------------	--

[USN]

BEAUFORT MCAS (MERRITT FLD) (KNBC)

**ALSIF-1**

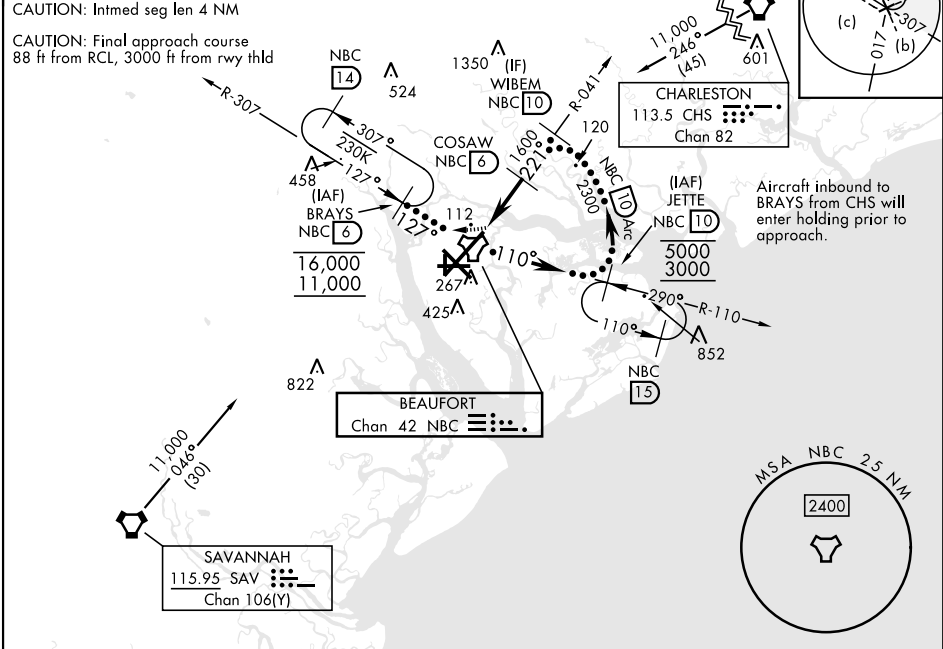
**A1**

\* When ALS inop, increase vis to 1 mile.

MISSED APPROACH: Climb to 500 then climbing right turn to 3000, join NBC TACAN R-307 to direct BRAYS and hold.

ATIS ★ <b>279.525</b>	APP CON <b>125.125 292.125</b> (ABV 3000) <b>123.7 269.125</b> (3000 and BLW)	TOWER★ <b>119.05 342.875</b>	GND CON <b>128.15 348.625</b>	CLNC DEL <b>128.15 254.375</b>	ASR/PAR
--------------------------	---	---------------------------------	----------------------------------	-----------------------------------	---------

Knots	60	120	180	240	300	360
V/V(fpm)	545	1090	1635	2180	2725	3270
Min climb of 545 ft/NM to 3000 - Controlling Obstacle Unk						



EMERG SAFE ALT 100 NM 3100

500 3000 BRAYS NBC 6

WIBEM NBC 10

COSAW NBC 6

WEMSA NBC 1.7

NBC TACAN NBC 2.2

WIBEM NBC 10

3000

1600

2300

3.03° TCH 43

0.5 4.3 NM

ELEV 37 TDZE 16

HIRL Rwy 5-23 and 14-32

14 32 23 221°

8000 x 200

12000 x 200

TWR

A1 A2

CATEGORY	C	D	E
S-23 *	380-¾	364 (400-¾)	
CIRCLING	580-1½ 543 (600-1½)	600-2 563 (600-2)	740-2 ½ 703 (800-2½)

HI-TACAN X RWY 23