

TACAN Y RWY 03

TACAN NID Chan 53	APCH CRS 034°	Rwy ldg TDZE Arpt Elev	10,000 2284 2288
----------------------	------------------	------------------------------	------------------------

[USN]

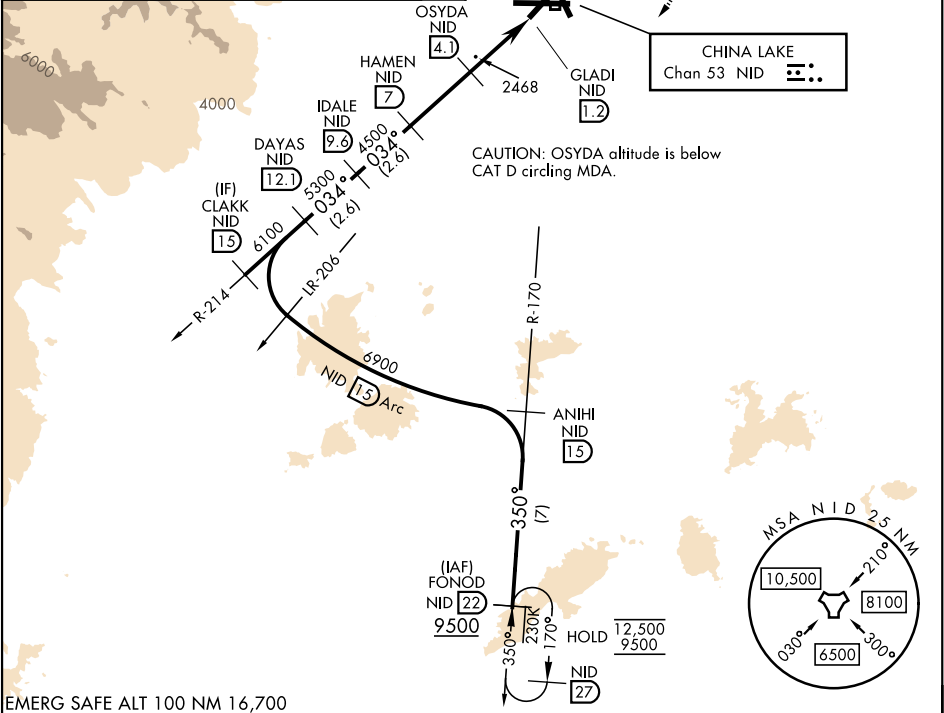
CHINA LAKE NAWS (ARMITAGE FLD) (KNID)

RADAR required	MISSED APPROACH: Climb to 3600 then climbing right turn to 9500 to intercept NID R-170 to FONOD and hold. Continue climb-in-hold to 9500.
----------------	---

ATIS ★ 322.375	JOSHUA APP/DEP CON 133.65 348.7	TOWER ★ 120.15 340.2	GND CON 350.3	CLNC DEL 254.25
-------------------	------------------------------------	-------------------------	------------------	--------------------

%	Knots	60	120	180	240	300	360
4.1	V/V(fpm)	249	498	747	996	1245	1494

Min climb of 4.1% (249 ft/NM) to 4100 - Controlling Obstacle Unk



EMERG SAFE ALT 100 NM 16,700

ELEV 2288	TDZE 2284	CLAKK NID 15	DAYAS NID 12.1	IDALE NID 9.6	HAMEN NID 7	OSYDA NID 4.1	GLADI NID 1.2	FONOD NID 22
CATEGORY		A		B		C		D
S-03 (4.1%)		2780-1 496 (500-1)		2780-1 3/8 496 (500-1 3/8)				
S-03		3080-1 796 (800-1)		3080-1 1/4 796 (800-1 1/4)		3080-2 1/2 796 (800-2 1/2)		
CIRCLING		3080-1 796 (800-1)		3080-1 1/4 796 (800-1 1/4)		3080-2 1/2 796 (800-2 1/2)		3700-3 1416 (1500-3)

TACAN Y RWY 03

SW-3, 10 JUL 2025 to 07 AUG 2025

SW-3, 10 JUL 2025 to 07 AUG 2025