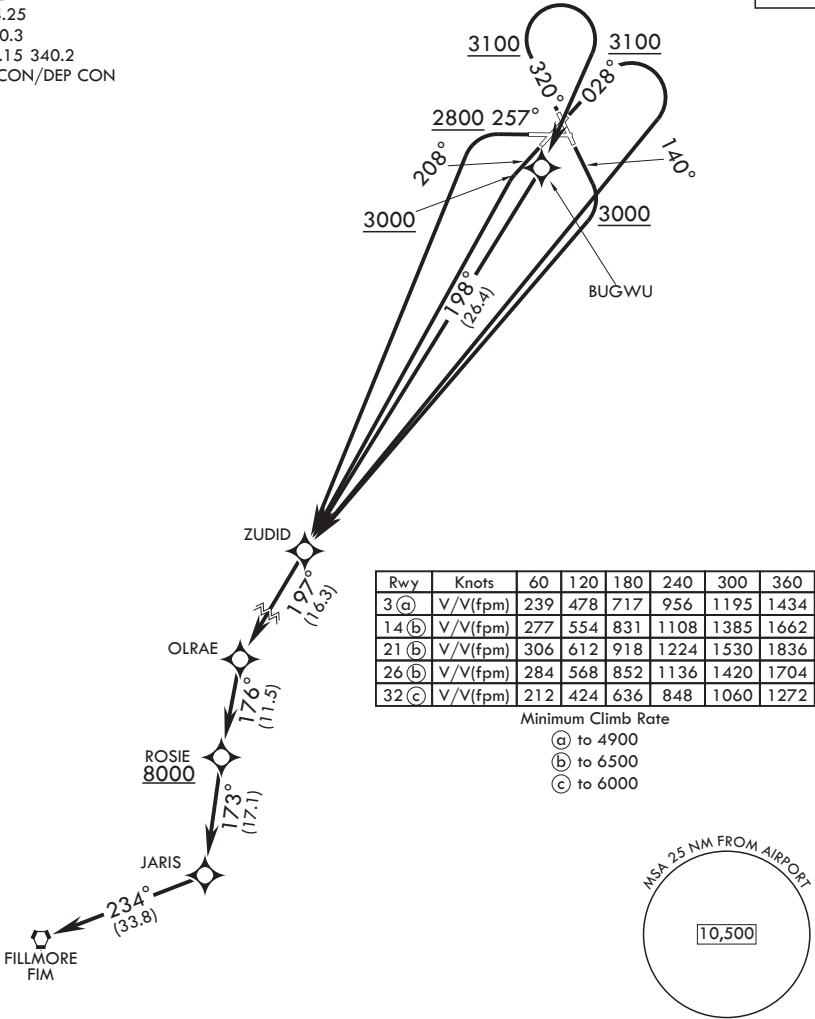


SW-3, 10 JUL 2025 to 07 AUG 2025

ATIS * 322.375
CLNC DEL 254.25
GND CON 350.3
TOWER * 120.15 340.2
JOSHUA APP CON/DEP CON
133.65 348.7

RNAV1



T DEPARTURE ROUTE DESCRIPTION

- TAKEOFF RWY 3: Climb heading 028° to 3100, then climbing right turn direct ZUDID. Thence...
- TAKEOFF RWY 14: Climb heading 140° to 3000, then climbing right turn direct ZUDID. Thence...
- TAKEOFF RWY 21: Climb heading 208° to 3000, then climbing left turn direct ZUDID. Thence...
- TAKEOFF RWY 26: Climb heading 257° to 2800, then climbing left turn direct ZUDID. Thence...
- TAKEOFF RWY 32: Climb heading 320° to 3100, then climbing right turn direct BUGWU, then direct ZUDID. Thence...

...from over ZUDID proceed via depicted route to FILLMORE VORTAC. Cross ROSIE at or above 8000 or as assigned.

SW-3, 10 JUL 2025 to 07 AUG 2025