

RIDGECREST, CALIFORNIA

25163

RNAV (GPS) RWY 32

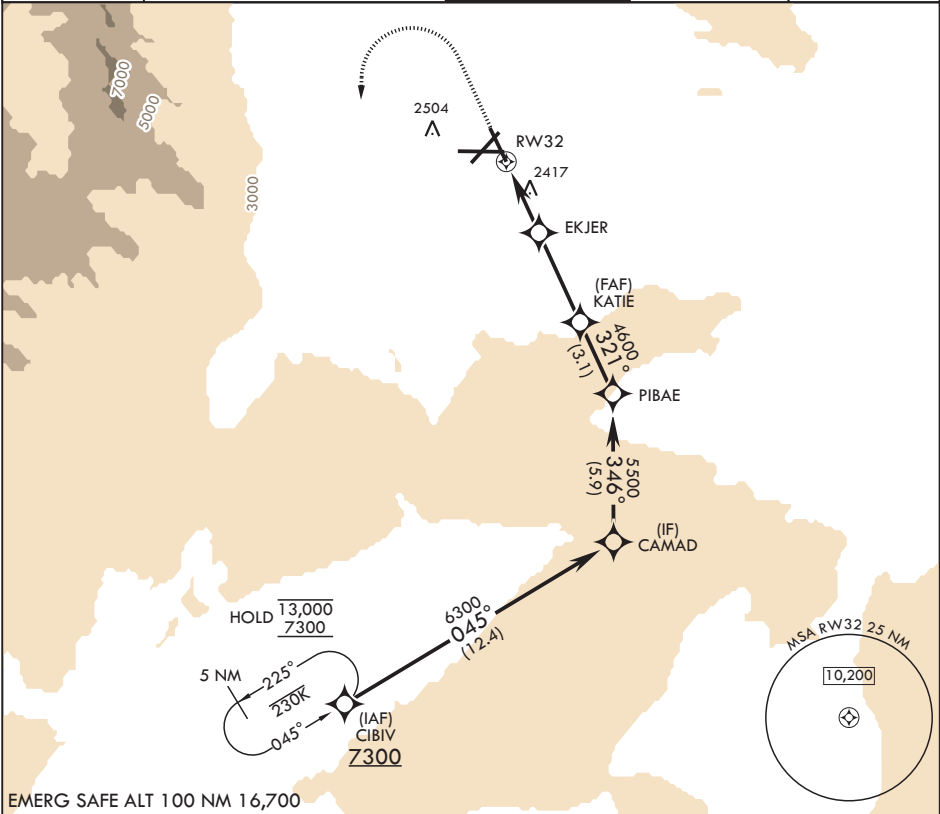
APCH CRS	Rwy Idg	9013
321°	TDZE	2241
	Arprt Elev	2288

- (USN)

CHINA LAKE NAW'S (ARMITAGE FLD) (KNID)

RNP APCH-GPS	MISSED APPROACH: (Do not exceed 225 KIAS until initial turn completion) Climb to 3800 then climbing left turn to 7300 direct CIBIV and hold.
RADAR required	

ATIS★ 322.375	JOSHUA APP CON/DEP CON 133.65 348.7	TOWER★ 120.15 340.2	GND CON 350.3	CLNC DEL 254.25
------------------	--	------------------------	------------------	--------------------



EMERG SAFE ALT 100 NM 16,700

		VGSI and Descent Angle not coincident (VGSI 3.00/TCH 50).	ELEV 2288	TDZE 2241
CATEGORY	A	B	C	D
LNAV MDA	2700-1	459 (500-1)	2700-1½	459 (500-1½)
	2780-1	2820-1	2820-1½	3700-3
CIRCLING	496 (500-1)	536 (600-1)	536 (600-1½)	1416 (1500-3)

RIDGECREST, CALIFORNIA

35°41'N - 117°42'W

CHINA LAKE NAW'S (ARMITAGE FLD) (KNID)

Amdt 6 12JUN25

RNAV (GPS) RWY 32

SW-3, 10 JUL 2025 to 07 AUG 2025

SW-3, 10 JUL 2025 to 07 AUG 2025