

RIDGECREST, CALIFORNIA

HI-TACAN Z RWY 32

TACAN NID Chan 53	APCH CRS 313°	Rwy ldg TDZE Arpt Elev	9013 2241 2288
----------------------	------------------	------------------------------	----------------------

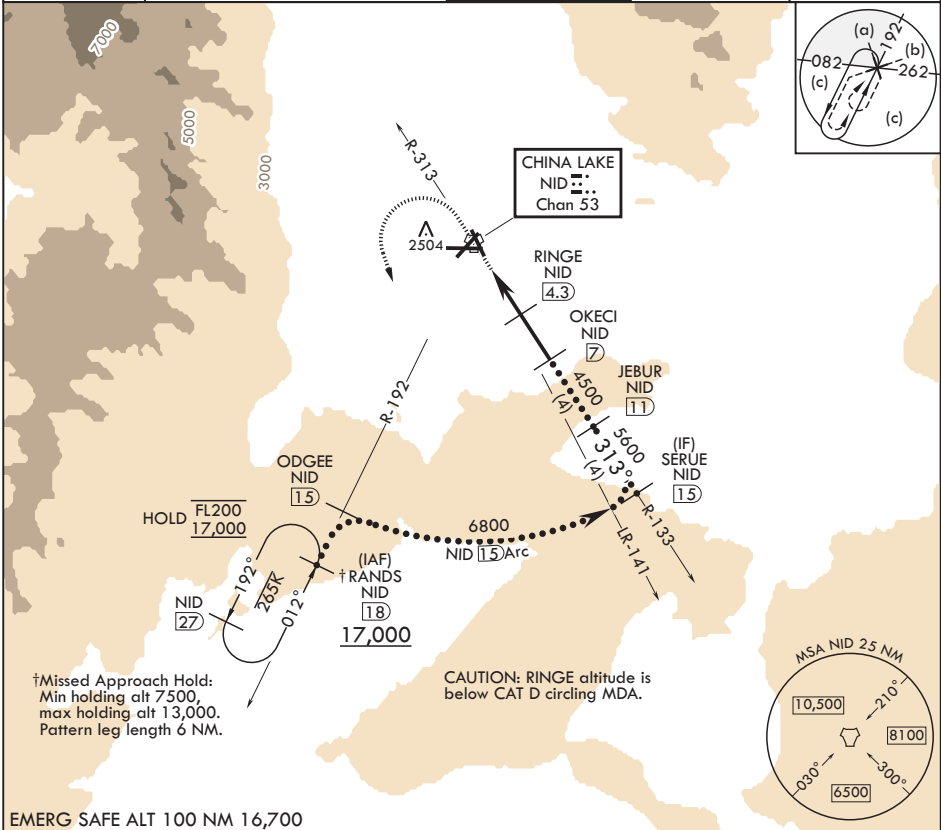
- (USN)

CHINA LAKE NAWS (ARMITAGE FLD) (KNID)

RADAR required

MISSED APPROACH: Climb to 3600, then climbing left turn to 7500 to intercept NID TACAN R-192 and RANDS and hold. Continue climb-in-hold to 7500.

ATIS★ 322.375	JOSHUA APP CON/DEP CON 133.65 348.7	TOWER★ 120.15 340.2	GND CON 350.3	CLNC DEL 254.25
------------------	--	------------------------	------------------	--------------------



EMERG SAFE ALT 100 NM 16,700

3600 ↑ NID R-192	7500 NID R-192	RANDS NID 18	VGSI and descent angles not coincident (VGSI 3.00/TCH 50).	SERUE 15	ELEV 2288	TDZE 2241
<p>TACAN</p> <p>FABAT 1.6</p> <p>RINGE 4.3</p> <p>OKECI 7</p> <p>JEBUR 11</p> <p>SERUE 15</p> <p>6800</p> <p>5600</p> <p>313°</p> <p>3380</p> <p>4500</p> <p>0.7</p> <p>2.7 NM</p> <p>2.7 NM</p> <p>≤ 3.39° TCH 45</p>						
CATEGORY	C	D	E			
S-32	2740-1%	499	(500-1%)			
CIRCLING	2820-1½ 536 (600-1½)	3700-3 1416 (1500-3)	NA			

<p>10,000 ± 20</p> <p>0.3% LIP</p> <p>0.5% LIP</p> <p>11,199 ± 200</p> <p>313°</p> <p>BCN</p> <p>TWR</p>	
HIRL all rwys	

RIDGECREST, CALIFORNIA

35°41'N - 117°42'W

CHINA LAKE NAWS (ARMITAGE FLD) (KNID)

Amndt 6 12JUN25

HI-TACAN Z RWY 32

SW-3, 10 JUL 2025 to 07 AUG 2025

SW-3, 10 JUL 2025 to 07 AUG 2025