



RIDGECREST, CALIFORNIA

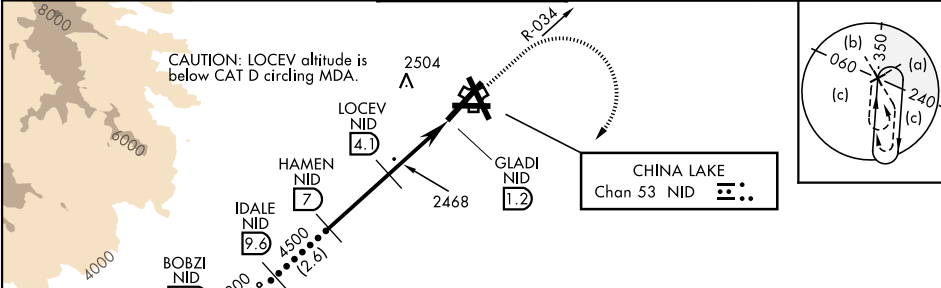
25163

HI-TACAN Z RWY 03

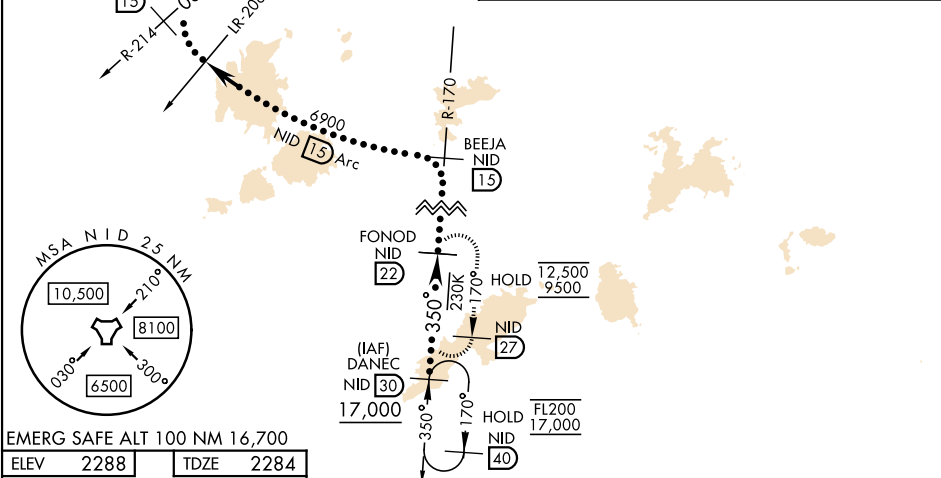
TACAN NID Chan 53	APCH CRS 034°	Rwy Idg 10,000 TDZE 2284 Arprt Elev 2288	[USN]	CHINA LAKE NAWs (ARMITAGE FLD)	(KNID)
----------------------	------------------	------------------------------------------------	-------	--------------------------------	--------

RADAR required	MISSED APPROACH: Climb to 3600 then climbing right turn to 9500, intercept NID TACAN R-170 to FONOD and hold. Continue climb-in-hold to 9500.
----------------	-----------------------------------------------------------------------------------------------------------------------------------------------

ATIS ★ 322.375	JOSHUA APP/DEP CON 133.65 348.7	TOWER ★ 120.15 340.2	GND CON 350.3	CLNC DEL 254.25
-------------------	------------------------------------	-------------------------	------------------	--------------------



%	Knots	60	120	180	240	300	360
4.1	V/V(fpm)	249	498	747	996	1245	1494
Min climb of 4.1% (249 ft/NM) to 4100 - Controlling Obstacle Unk							



CLACK NID 15		BOBZI NID 12.1	IDALE NID 9.6	HAMEN NID 7	LOCEV NID 4.1	GLADI NID 1.2	FONOD NID 22
6900		6100	5300	4500	3260	3600	9500
034°		034°	034°	3.50°	TCH 40	NID TACAN	NID R-170
2.9 NM		2.9 NM	0.1				
CATEGORY	C		D		E		
S-03 (4.1%)	2780-13½		496		(500-13½)		
S-03	3080-2½		796		(800-2½)		
CIRCLING	3080-2½ 796 (800-2½)		3700-3 1416 (1500-3)		NOT AUTHORIZED		

RIDGECREST, CALIFORNIA

35° 41' N - 117° 42' W

CHINA LAKE NAWs (ARMITAGE FLD) (KNID)

Amtd 1 12JUN25

HI-TACAN Z RWY 03



SW-3, 10 JUL 2025 to 07 AUG 2025

SW-3, 10 JUL 2025 to 07 AUG 2025