

WAAS
CH **82616**
W31A

APP CRS
311°

Rwy Idg
TDZE **681**
Apt Elev **694**

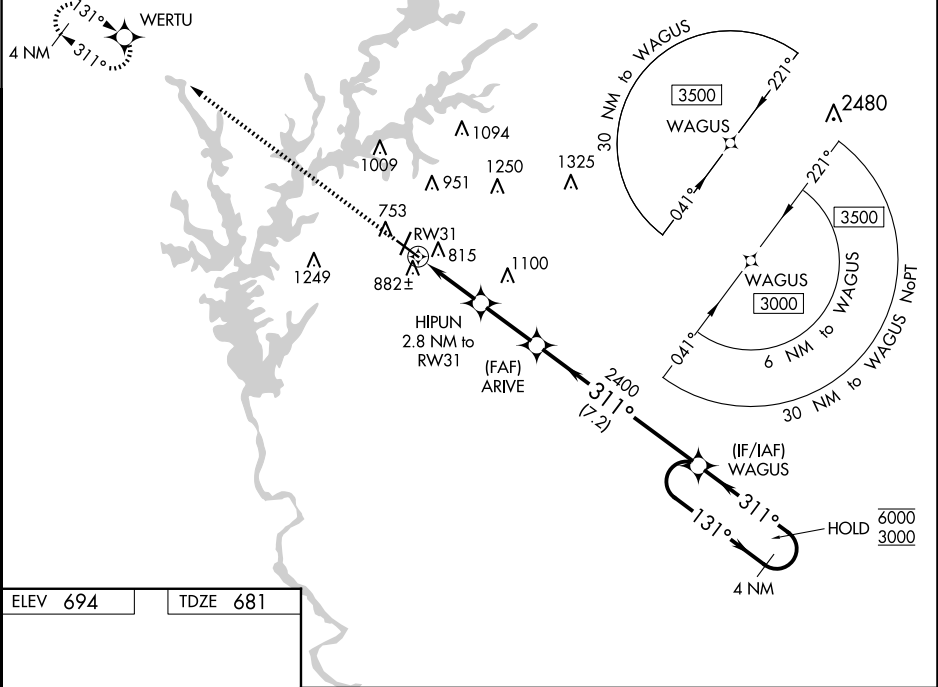
RNAV (GPS) RWY 31
LAGRANGE/CALLAWAY (LGC)

RNP APCH.
 Circling Rwy 13, 21 NA at night.
For uncompensated Baro-VNAV systems,
LNAV/VNAV NA below -16°C or above 54°C.

MALSR

MISSED APPROACH: Climb to 3500 direct WERTU and hold.

AWOS-3 126.325	ATLANTA APP CON★ 125.5 323.1	CINC DEL 119.25	UNICOM 122.975 (CTAF)
--------------------------	--	---------------------------	---------------------------------



ELEV 694

TDZE 681

REIL Rwy 13
HIRL Rwy 13-31

3500	WERTU			
*LNAV only.	HIPUN 2.8 NM to RW31	ARIVE 2400	WAGUS 4 NM Holding Pattern	
	RW31	1600*	2400	GP 3.00° TCH 41
	1.3 NM	1.5 NM	2.5 NM	7.2 NM
CATEGORY	A	B	C	D
LPV DA	881-1/2		200 (200-1/2)	
LNAV/VNAV DA	1112-3/4		431 (500-3/4)	
LNAV MDA	1140-1/2	459 (500-1/2)	1140-7/8	459 (500-7/8)
CIRCLING	1280-1	586 (600-1)	1540-2 1/2 846 (900-2 1/2)	1600-3 906 (1000-3)