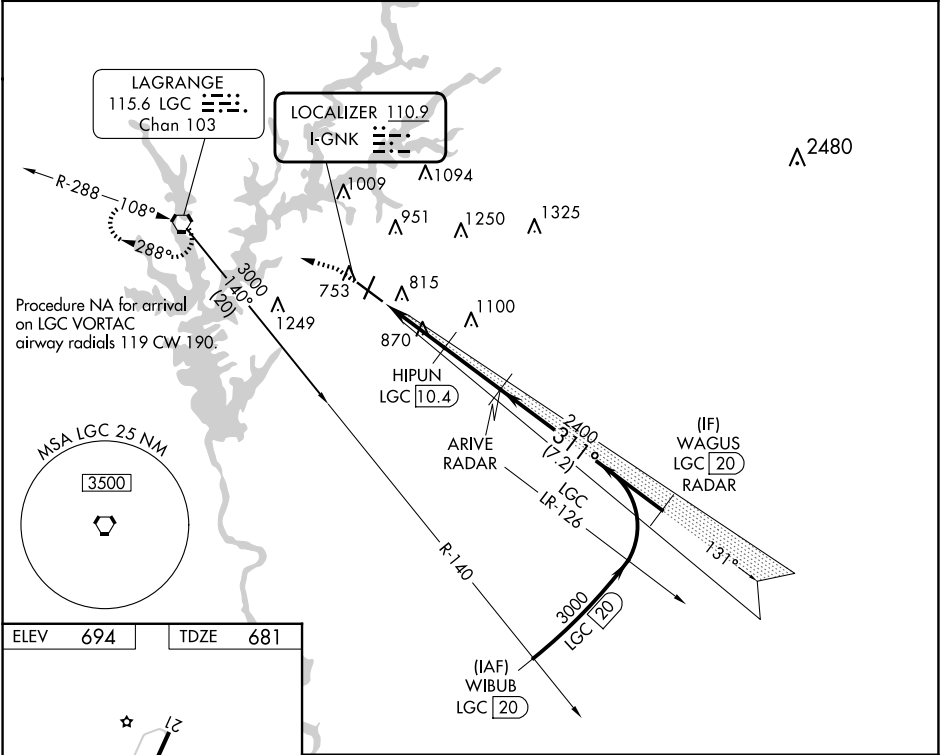


LOC I-GNK 110.9	APP CRS 311°	Rwy ldg TDZE Apt Elev 6499 681 694
---------------------------	------------------------	--

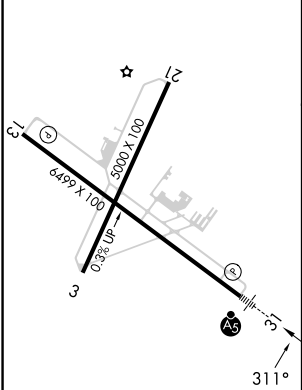
ILS or LOC RWY 31
LAGRANGE/CALLAWAY (LGC)

DME required for procedure entry. RADAR and DME required for LOC only.	MALSR 	MISSED APPROACH: Climb to 1200 then climbing left turn to 2400 direct LGC VORTAC and hold.
Circling Rwy 13, 21 NA at night. DME from LGC VORTAC. Simultaneous reception of I-GNK and LGC DME required.		

AWOS-3 126.325	ATLANTA APP CON★ 125.5 323.1	CINC DEL 119.25	UNICOM 122.975 (CTAF)
--------------------------	--	---------------------------	---------------------------------



ELEV 694	TDZE 681
--------------------	--------------------



1200	2400	LGC	WAGUS LGC 20 RADAR	
*LOC only.		HIPUN LGC 10.4	ARIVE RADAR	
		2400	311°	3000
1.3		1.5	2.5 NM	7.2 NM
CATEGORY	A		B	C
S-ILS 31	881-½		200 (200-½)	
S-LOC 31	1120-½ 439 (500-½)		1120-¾ 439 (500-¾)	
CIRCLING	1280-1 586 (600-1)		1540-2½ 846 (900-2½) 1600-3 906 (1000-3)	