

WAAS CH 86212 W22A	APP CRS 219°	Rwy Ldg 8001 TDZE 322 Apt Elev 322
--	------------------------	---

RNAV (GPS) RWY 22

MILLINGTON/MEMPHIS (NQA)

RNP APCH - GPS.

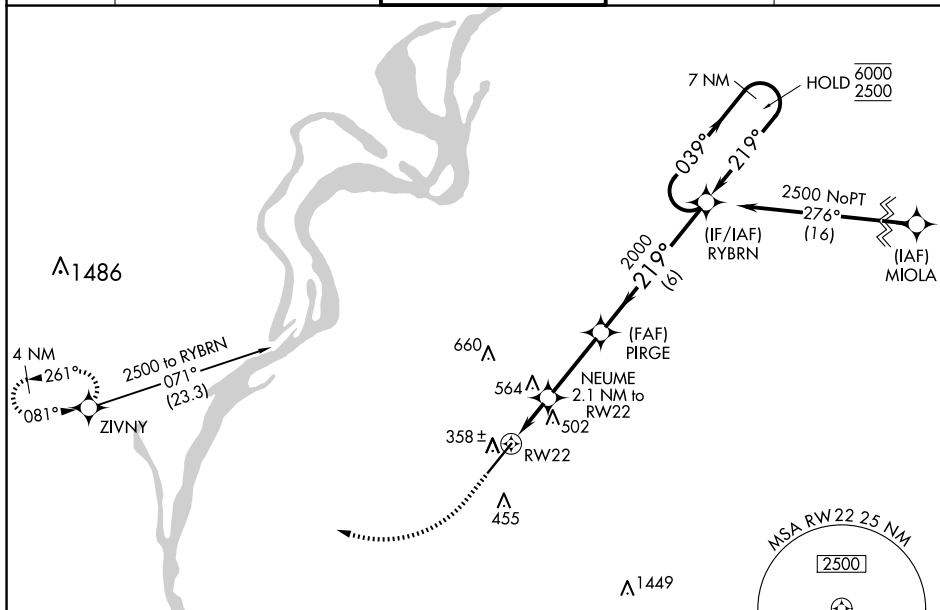
- ▲** For uncompensated Baro-VNAV systems, LNAV/VNAV NA below -15°C or above 54°C.
▲ For inop ALS, increase LPV Cat E visibility to 3/4 SM, LNAV/VNAV all Cats visibility to 1 1/2 SM, and LNAV Cat E visibility to 1 1/2 SM.

MALSR

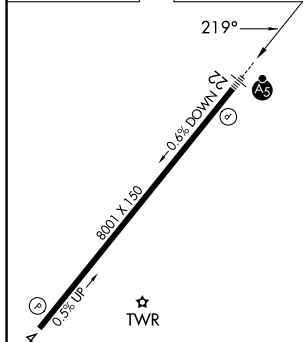


MISSED APPROACH:
Climb to 840 then
climbing right turn to
2500 direct ZIVNY
and hold.

AWOS-3 118.925	MEMPHIS APP CON 119.1 291.6 (176°-355°) 125.8 338.3 (356°-175°)	MILLINGTON TOWER ★ 120.25 (CTAF) 0 340.2	GND CON 121.375	UNICOM 122.95
--------------------------	---	--	---------------------------	-------------------------



ELEV	322		TDZE	322
------	-----	--	------	-----



840 2500 ZIVNY VGS and RNAV glidepath not coincident (VGS Angle 3.00/TCH 67). 7 NM Holding Pattern

RYBRN 039° 6000 2500 219° 2000 1040 2000 1.2 NM to RW22 2.1 NM to RW22 1.2 NM 0.9 NM 3 NM 6 NM GP 3.00° TCH 55

CATEGORY	A	B	C	D	E
LPV DA		522-½	200 (200-½)		
RNAV/ VNAV DA		784-1	462 (500-1)		
RNAV MDA	780-½	458 (500-½)	780-¾	458 (500-¾)	
CIRCLING	800-1 478 (500-1)	820-1 498 (500-1)	920-1½ 598 (600-1½)	960-2 638 (700-2)	960-2¼ 638 (700-2¼)