

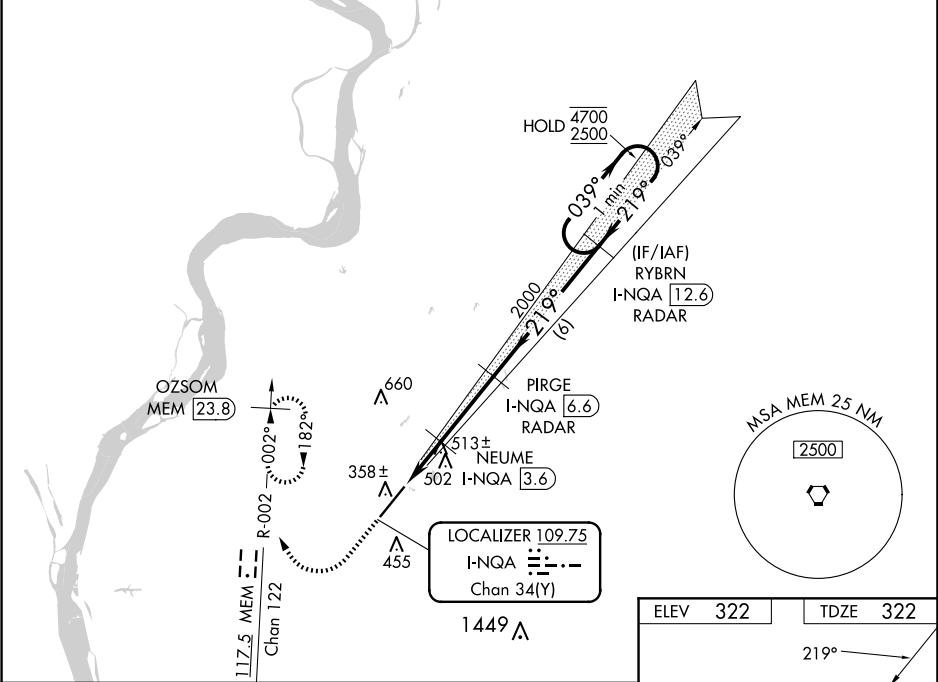
LOC/DME I-NQA	APP CRS	Rwy Ldg	8001
109.75	219°	TDZE	322
Chan 34 (Y)		Apt Elev	322

ILS or LOC RWY 22

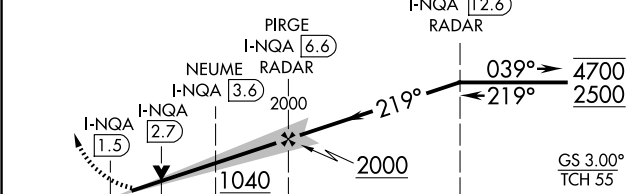
MILLINGTON/MEMPHIS (NQA)

RADAR required for procedure entry. DME required.		MALSR	MISSED APPROACH: Climb to 1000 then climbing right turn to 3000 and on MEM VORTAC R-002 to OZSOM/MEM 23.8 DME and hold, continue climb-in-hold to 3000.
<div><div></div><div></div></div>	S-ILS 22 procedure NA when control tower closed if ceiling/visibility lower than 800/2. For inop ALS, increase S-ILS 22 Cat E visibility to ¾ SM and S-LOC 22 Cat E visibility to 1½ SM.		

AWOS-3	MEMPHIS APP CON		MILLINGTON TOWER ★	GND CON	UNICOM
118.925	119.1	291.6	120.25 (CTAF) 0 340.2	121.375	122.95
	125.8	338.3	(176°-355°) (356°-175°)		



1000	3000	OZSOM MEM 23.8	VGSI and ILS glidepath not coincident (VGSI Angle 3.00/TCH 67).	One Minute Holding Pattern



CATEGORY	A	B	C	D	E
S-ILS 22	522-½ 200 (200-½)				
S-LOC 22	780-½	458 (500-½)	780-¾	458 (500-¾)	
CIRCLING	800-1	820-1	920-1½	960-2	960-2¼
	478 (500-1)	498 (500-1)	598 (600-1½)	638 (700-2)	638 (700-2¼)

