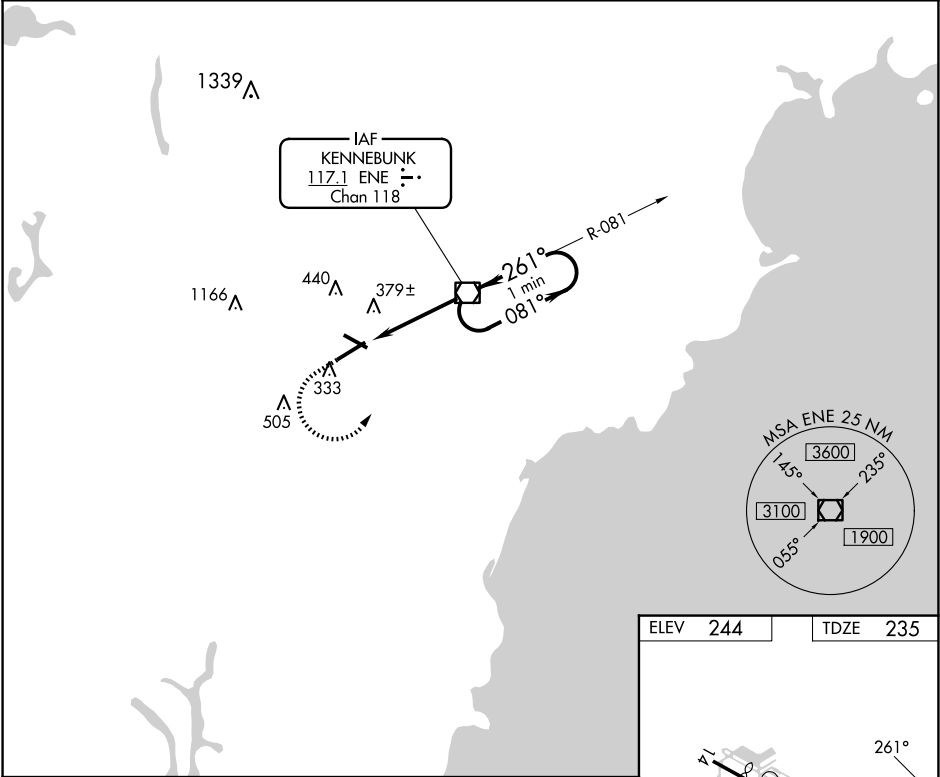
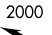



VORTAC ENE	APP CRS	Rwy Idg	6001
117.1	261°	TDZE	235
Chan 118		Apt Elev	244

VOR RWY 25
SANFORD SEACOAST RGNL (SFM)

Inoperative table does not apply to S-25 Cats A/B. For inoperative ODALS, increase S-25 Cats C/D visibility to 1 1/8. When local altimeter setting not received, use Rochester, NH altimeter setting increase all MDA 40 feet, S-25 Cats C/D visibility 1/8 SM, and Circling Cat C visibility 1/4 SM; for inop ODALS, increase S-25 Cats C/D visibility to 1 1/8. Rwy 25 helicopter visibility reduction below 3/4 SM NA.			ODALS MISSED APPROACH: Climb to 800 then climbing left turn to 2000 direct ENE VOR/DME and hold.
AWOS-3PT 120.025	PORTLAND APP CON ★ 119.75 269.35	CLNC DEL 121.725	UNICOM 123.075 (CTAF) 0



<div>800</div> <div>↑</div>		<div>2000</div> <div></div>	<div>ENE</div> <div></div>		<div>ENE VOR/DME</div>				<div>One Minute Holding Pattern</div>		
		<div>ENE 3.1</div> <div>ENE 4.2</div>		<div>081° →</div> <div>← 261°</div> <div>2000</div>							
		<div>261°</div> <div>3.17°</div> <div>TCH 47</div>		<div>1700</div>							
		<div>1.1</div> <div>3.1 NM</div>									
CATEGORY		A		B		C		D			
S-25		640-1 405 (400-1)									
CIRCLING		760-1 516 (600-1)				1180-2¾ 936 (1000-2¾)		1240-3 996 (1000-3)			

ELEV 244	TDZE 235
REIL Rwy 7 0 HIRL Rwy 7-25 0 MIRL Rwy 14-32 0	
FAF to MAP 4.2 NM	
Knots	60 90 120 150 180
Min:Sec	4:12 2:48 2:06 1:41 1:24