

WAAS CH 86921 W07A	APP CRS 075°	Rwy Idg TDZE 241 Apt Elev 244
--	------------------------	---

RNAV (GPS) RWY 7

SANFORD SEACOAST RGNL (SFM)

RNP APCH - GPS.

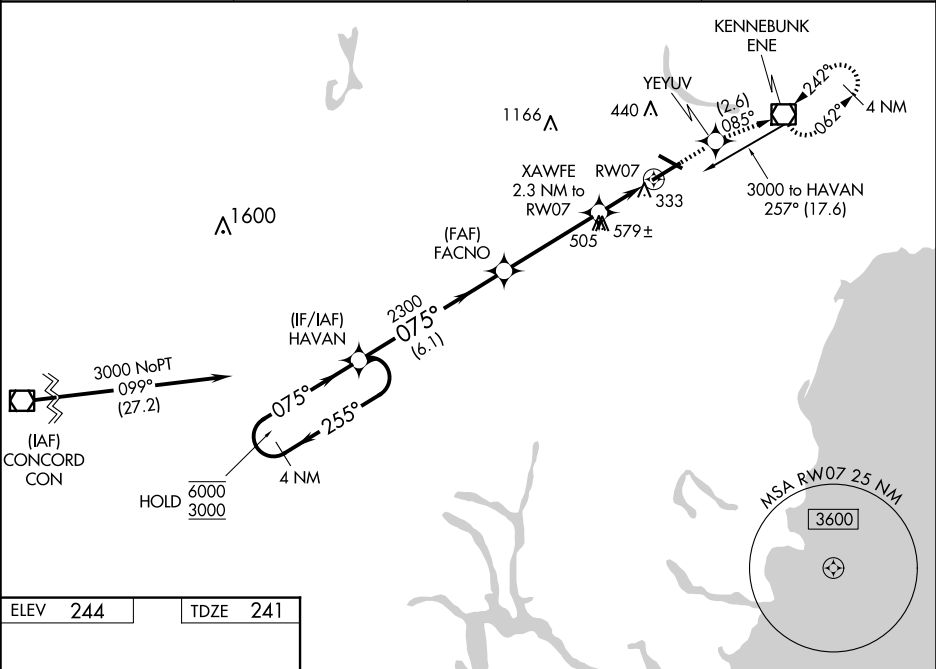
▼

⚠

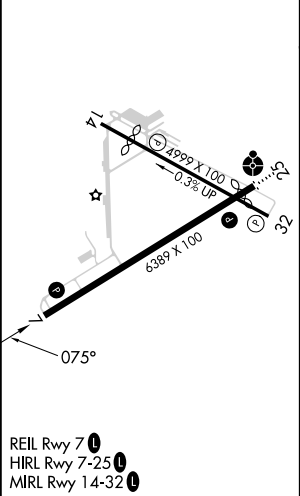
Rwy 7 helicopter visibility reduction below ¾ SM NA. For uncompensated Baro-VNAV systems, LNAV/VNAV NA below -15°C or above 54°C. Baro-VNAV and VDP NA when using Rochester altimeter setting. When local altimeter setting not received, use Rochester altimeter setting: increase LPV DA to 479; increase LNAV/VNAV DA to 699 and visibility all Cats ½ SM, increase all MDAs 40 feet, and Circling Cat C visibility ¼ SM.

MISSED APPROACH: Climb to 3000 direct YEYUV and on track 085° to ENE VOR/DME and hold, continue climb-in-hold to 3000.

AWOS-3PT 120.025	PORTLAND APP CON★ 119.75 269.35	CLNC DEL 121.725	UNICOM 123.075 (CTAF) 0
----------------------------	---	----------------------------	-----------------------------------



ELEV 244	TDZE 241
----------	----------



VGSI and RNAV glidepath not coincident (VGSI Angle 3.00/TCH 53).				3000	YEYUV	tr	ENE
4 NM Holding Pattern HAVAN						085°	
6000 ← 255° 075° → 2300				FACNO XAWFE 2.3 NM to RW07 1.7 NM to RW07			
GP 3.00° TCH 57				2300 1020			
				6.1 NM 4 NM 0.6 NM 1.7			
CATEGORY	A	B	C	D			
LPV DA	441-3¼			200 (200-¾)			
LNAV/VNAV DA	650-1¾			409 (500-1¾)			
LNAV MDA	840-1 599 (600-1)			840-1¾ 599 (600-1¾)			
CIRCLING	840-1 596 (600-1)			1180-2¾ 936 (1000-2¾)	1240-3 996 (1000-3)		