

APP CRS	Rwy Idg	4999
316°	TDZE	239
	Apt Elev	244

RNAV (GPS) RWY 32
SANFORD SEACOAST RGNL (SFM)

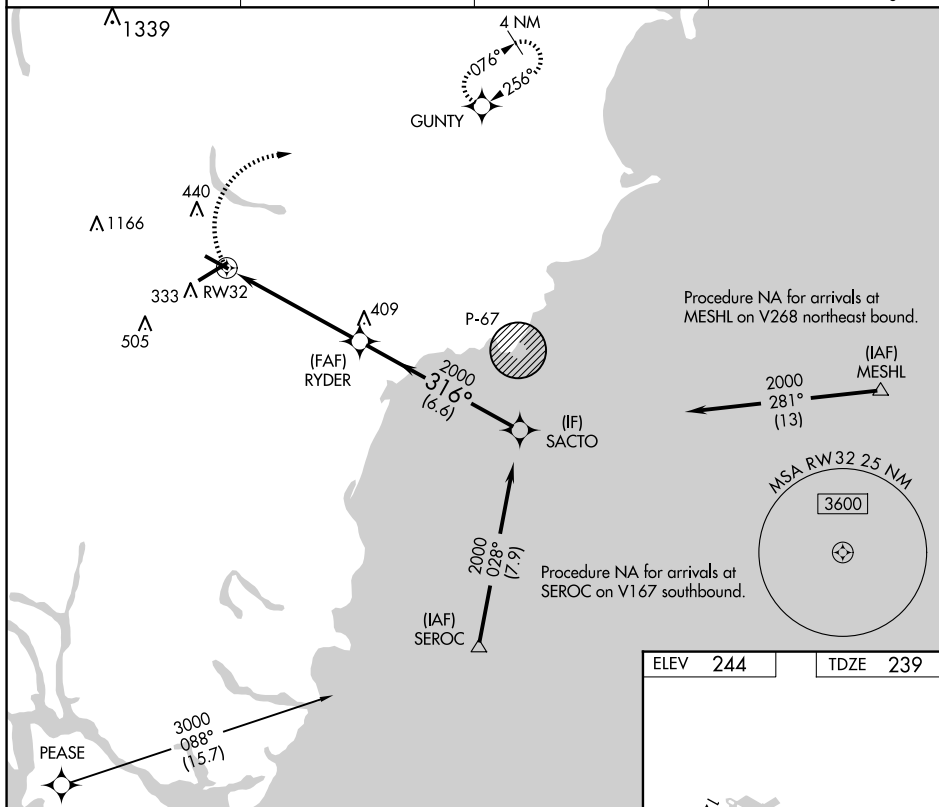
RNP APCH.



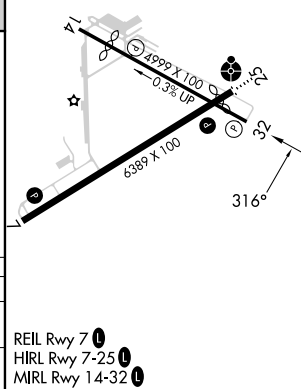
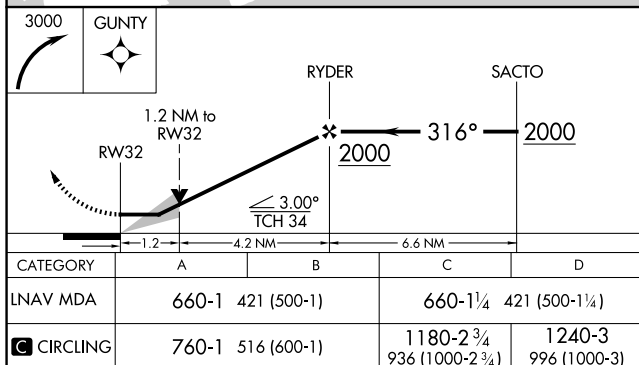
MISSED APPROACH: Climbing right turn to 3000 direct GUNTY and hold, continue climb-in-hold to 3000.

AWOS-3PT
120.025

PORTLAND APP CON★	
119.75	269.35

CLNC DEL
121.725UNICOM
123.075 (CTAF) **L**

ELEV	244		TDZE	239
------	-----	--	------	-----



SANFORD, MAINE

Amdt 1 17JUN21

43°24'N-70°42'W

SANFORD SEACOAST RGNL (SFM)
RNAV (GPS) RWY 32

NE-1, 10 JUL 2025 to 07 AUG 2025