

COTULLA, TEXAS

AL-907 (FAA)

24137

WAAS CH 42836 W31A	APP CRS 309°	Rwy Idg 6005 TDZE 464 Apt Elev 474
--	------------------------	---

RNAV (GPS) RWY 31
COTULLA-LA SALLE COUNTY (COT)

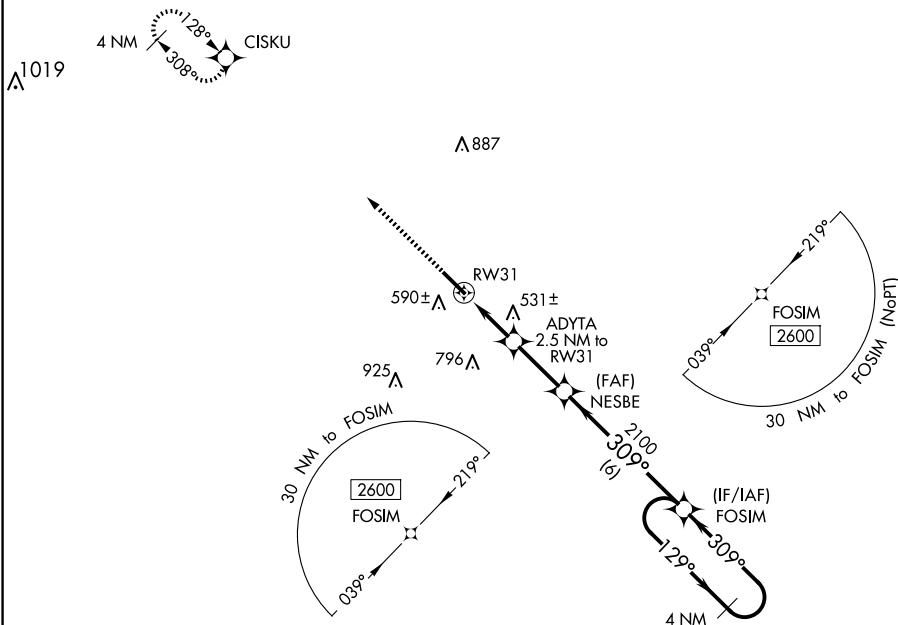
T

For uncompensated Baro-VNAV systems, LNAV/VNAV NA below -5°C (23°F) or above 54°C (130°F). DME/DME RNP-0.3 NA.

MISSED APPROACH: Climb to 2600 direct CISKU and hold.

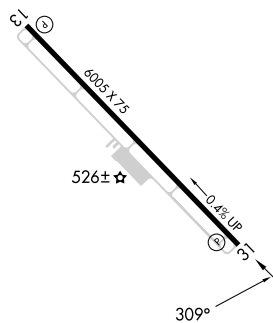
ASOS
118.325

HOUSTON CENTER
134.6 322.5

UNICOM
122.7 (CTAF) **L**

ELEV 474

TDZE 464

MIRL Rwy 13-31 **L**

Amdt 2 18SEP14

28°27'N-99°13'W

COTULLA-LA SALLE COUNTY (COT)
RNAV (GPS) RWY 31

SC-3, 10 JUL 2025 to 07 AUG 2025

2600 ↑ CISKU *LNAV only. 4 NM Holding Pattern

FOSIM 129° 2600

309° 2100

ADYTA 2.5 NM to RW31

*1 NM to RW31

RW31

*1280

GP 3.00° TCH 45

1 NM 1.5 NM 2.5 NM 6 NM

CATEGORY	A	B	C	D
LPV DA	714- $\frac{3}{4}$	250 (300- $\frac{3}{4}$)		NA
LNAV/VNAV DA	714- $\frac{3}{4}$	250 (300- $\frac{3}{4}$)		NA
LNAV MDA	800-1	336 (400-1)		NA
CIRCLING	920-1 446 (500-1)	940-1 466 (500-1)	1120-1 $\frac{3}{4}$ 646 (700-1 $\frac{3}{4}$)	NA