

WAAS CH 82399 W33A	APP CRS 333°	Rwy Idg TDZE Apt Elev	9803 995 1015
--	------------------------	-----------------------------	--

RNAV (GPS) RWY 33

ROBERT GRAY AAF (GRK)

RNP APCH - GPS.

▼

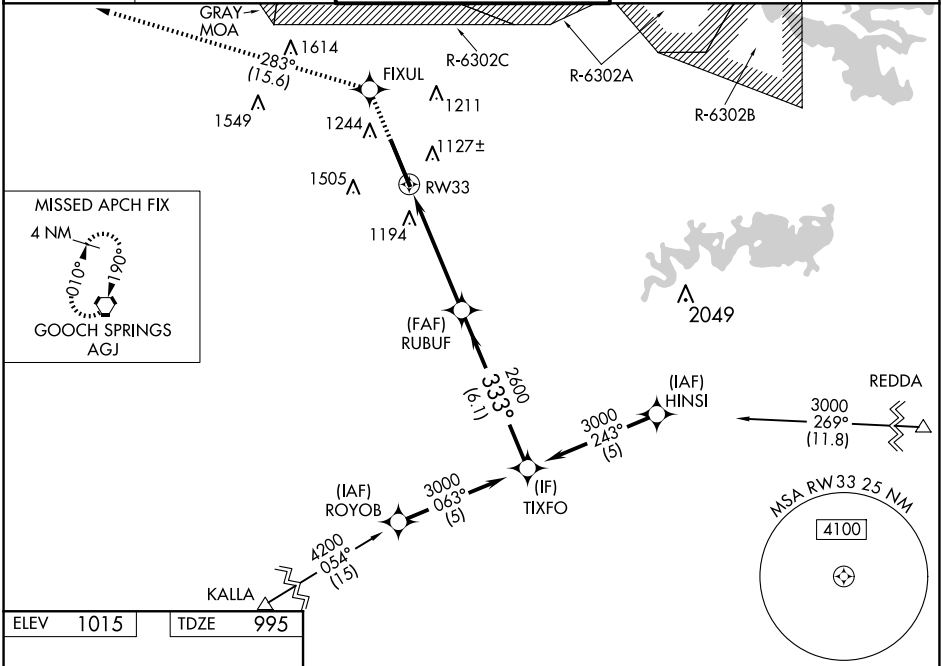
▲

For uncompensated Baro-VNAV systems, LNAV/VNAV NA below -17°C or above 54°C. Circling NA west of Rwy 15-33.
For inop ALS, increase LPV Cat E visibility to ¾ SM, LNAV/VNAV Cat E visibility to 2 SM, and LNAV Cat E visibility to 1½ SM.

MALSR

MISSED APPROACH: Climb to 3000 direct FIXUL and on track 283° to AGJ VORTAC and hold.

ATIS 124.9	GRAY APP CON 120.075 323.15	GRAY TOWER 120.75(CTAF) 285.5	GND CON 121.8 279.5	CLNC DEL 126.2 251.1
----------------------	---------------------------------------	---	-------------------------------	--------------------------------



ELEV 1015 TDZE 995

3000

FIXUL

tr 283°

AGJ

VGSI and RNAV glidepath not coincident (VGSI Angle 3.00/TCH 50).

TIXFO 3000

*LNAV only.

RUBUF 2600

RW33

1.5 NM to RW33

1.5 NM

3.4 NM

6.1 NM

GP 3.00° TCH 50

CATEGORY	A	B	C	D	E
LPV DA	1195-½ 200 (200-½)				
LNAV/VNAV DA	1552-1½ 557 (600-1½)				
LNAV MDA	1460-½	465 (500-½)	1460-1 465 (500-1)		
CIRCLING	1540-1	525 (600-1)	1560-1½ 545 (600-1½)	1620-2 605 (700-2)	1740-2½ 725 (800-2½)