

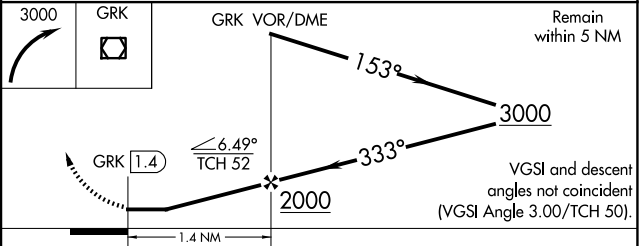
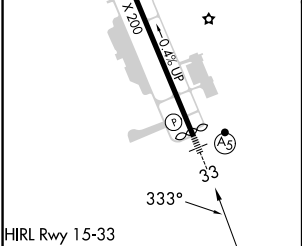
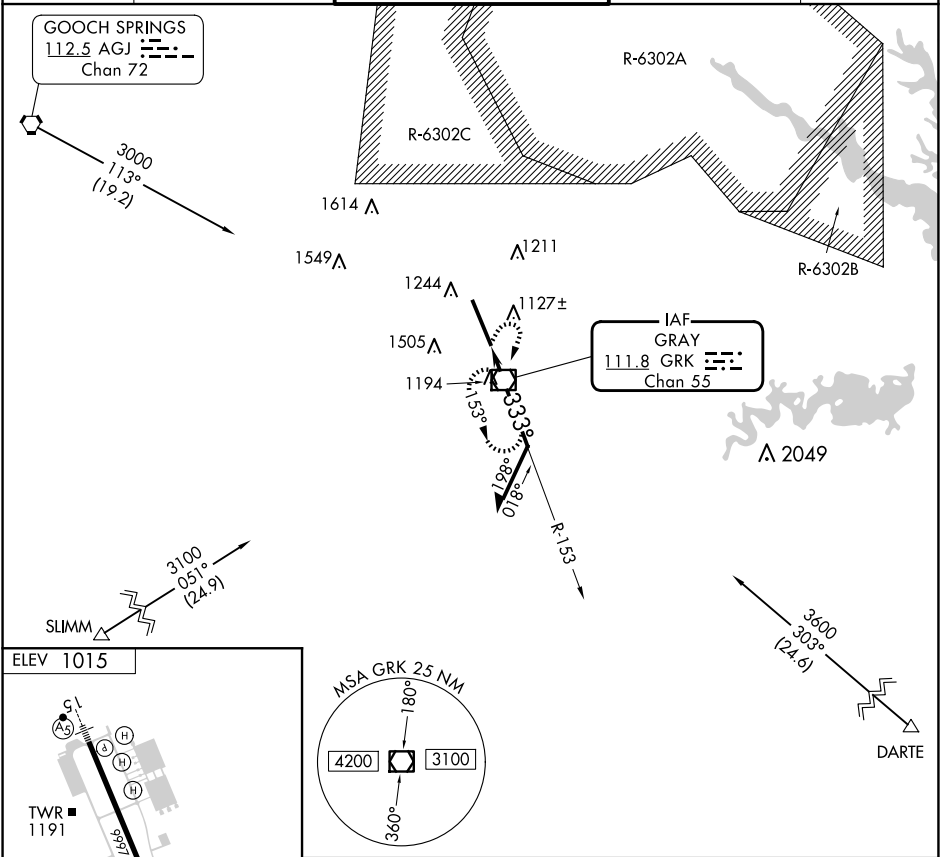
VOR/DME GRK	APP CRS	Rwy Idg	9803
111.8	333°	TDZE	N/A
Chan 55		Apt Elev	1015

COPTER VOR RWY 33

ROBERT GRAY AAF (GRK)

<div><div>NA</div><div>ASR/PAR</div></div>	<div>MALSR</div> <div></div>	MISSED APPROACH: Climbing right turn to 3000 direct GRK VOR/DME and hold.
--	------------------------------	---

ATIS	GRAY APP CON	GRAY TOWER	GND CON	CLNC DEL
124.9	120.075 323.15	120.75 (CTAF) 285.5	121.8 279.5	126.2 251.1



FAF to MAP 1.4 NM						CATEGORY	COPTER
Knots	45	60	75	90	105	H-33	1460-¼ 465 (500-¼)
Min:Sec	1:52	1:24	1:07	0:56	0:48		