

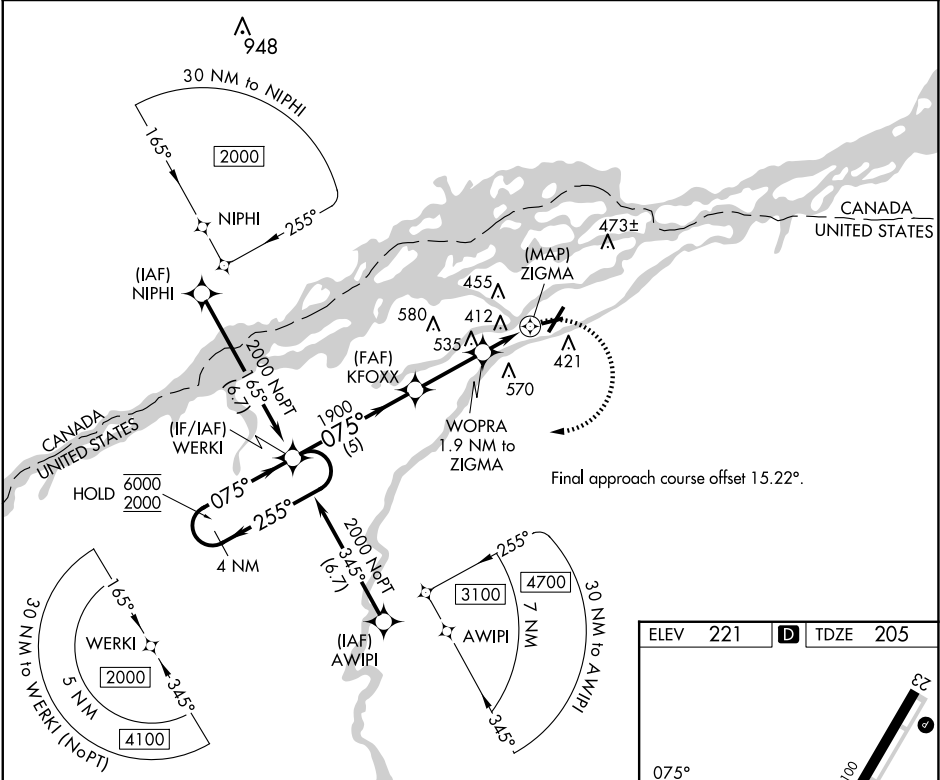




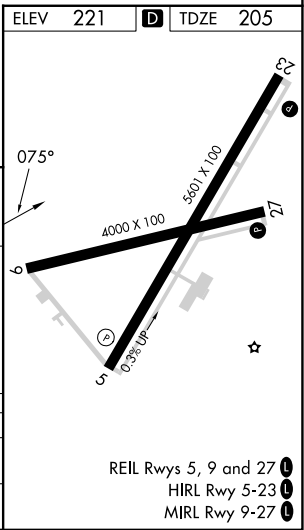
APP CRS	Rwy Idg	4000
075°	TDZE	205
	Apt Elev	221

RNAV (GPS) RWY 9  
MASSENA INTL-RICHARDS FLD (MSS)

RNP APCH - GPS.		MISSED APPROACH: Climbing right turn to 2000 direct WERKI and hold.
	Rwy 9 helicopter visibility reduction below 1 SM NA. Straight-in Rwy 9 NA at night, Circling Rwy 9, 23, 27 NA at night.	
ASOS 128.075	BOSTON CENTER 135.25 377.1	UNICOM 123.0 (CTAF) 



4 NM Holding Pattern WERKI		Visual Segment - Obstacles.		2000	WERKI
6000 ← 255°		KFOXX			
2000 → 075°		WOPRA 1.9 NM to ZIGMA		ZIGMA	
		1900		1020	
		5 NM		2.8 NM	
				1.9 NM	
				0.5	
CATEGORY	A	B	C	D	
LNAV MDA	680-1	475 (500-1)	680-1 $\frac{3}{8}$	475 (500-1 $\frac{3}{8}$ )	
 CIRCLING	740-1	519 (600-1)	880-1 $\frac{3}{4}$ 659 (700-1 $\frac{3}{4}$ )	880-2 659 (700-2)	



NE-2, 10 JUL 2025 to 07 AUG 2025

NE-2, 10 JUL 2025 to 07 AUG 2025