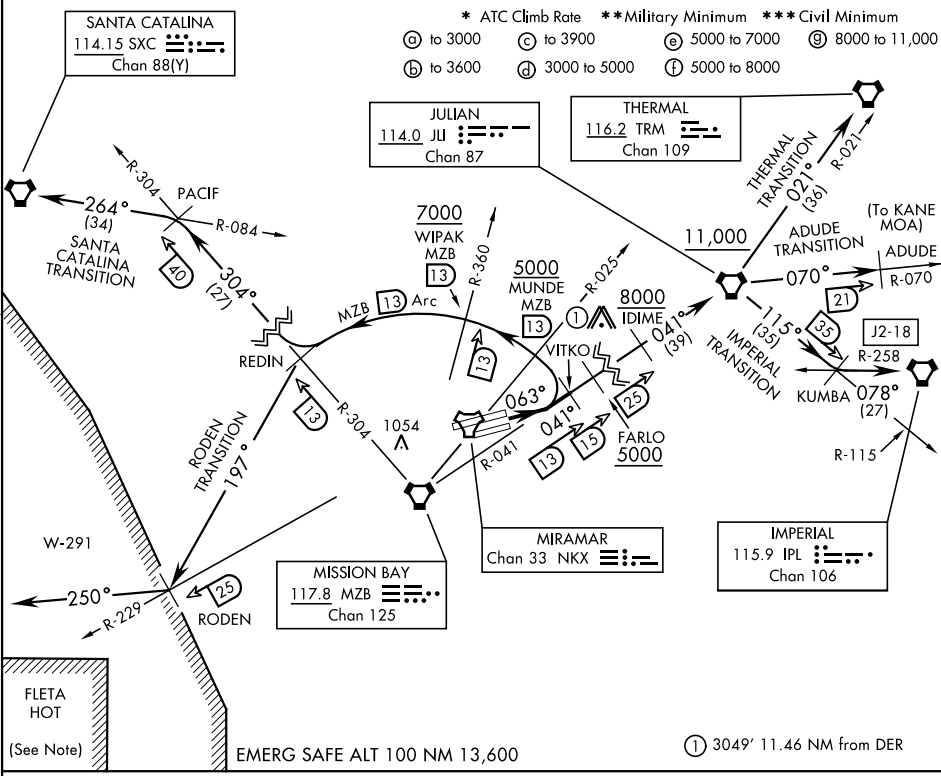


ATIS ★ 133.475 352.0 CLNC DEL 125.975 254.325 GND CON 128.625 307.325 FOSS TOWER ★ 135.2 298.925 SOCAL DEP CON 132.2 269.1 E	[USN]	Rwy	Knots	60	120	180	240	300	360
		* 6L/R ⓐ	V/V(fpm)	520	1040	1560	2080	2600	3120
		** 6L/R ⓑ	V/V(fpm)	280	560	840	1120	1400	1680
		*** 6L/R Ⓒ	V/V(fpm)	300	600	900	1200	1500	1800
		* 6L/R ⓓ	V/V(fpm)	680	1360	2040	2720	3400	4080
		** 6L/R ⓔ	V/V(fpm)	353	706	1059	1412	1765	2118
		* 6L/R Ⓕ	V/V(fpm)	300	600	900	1200	1500	1800
		** 6L/R Ⓖ	V/V(fpm)	220	440	660	880	1100	1320



DEPARTURE ROUTE DESCRIPTION

TAKEOFF RWY 6L/R: Climb via heading 063° to intercept and proceed via MZB VORTAC R-041 to VITKO. Join MZB R-041 at or above 3000. Thence...

ADUDE TRANSITION (VITKO3.ADUDE): Via MZB R-041 to JLI VORTAC. Then JLI R-070 to ADUDE. Cross FARLO at or above 5000. Cross IDIME at or above 8000. Cross JLI VORTAC at or above 11,000. (To operate in KANE MOA.)

IMPERIAL TRANSITION (VITKO3.IPL): Via MZB R-041 to JLI VORTAC. Then via JLI R-115 to KUMBA INT, then via IPL VORTAC R-258 to IPL. Cross FARLO at or above 5000. Cross IDIME at or above 8000. Cross JLI VORTAC at or above 11,000.

(CONTINUED ON FOLLOWING PAGE)