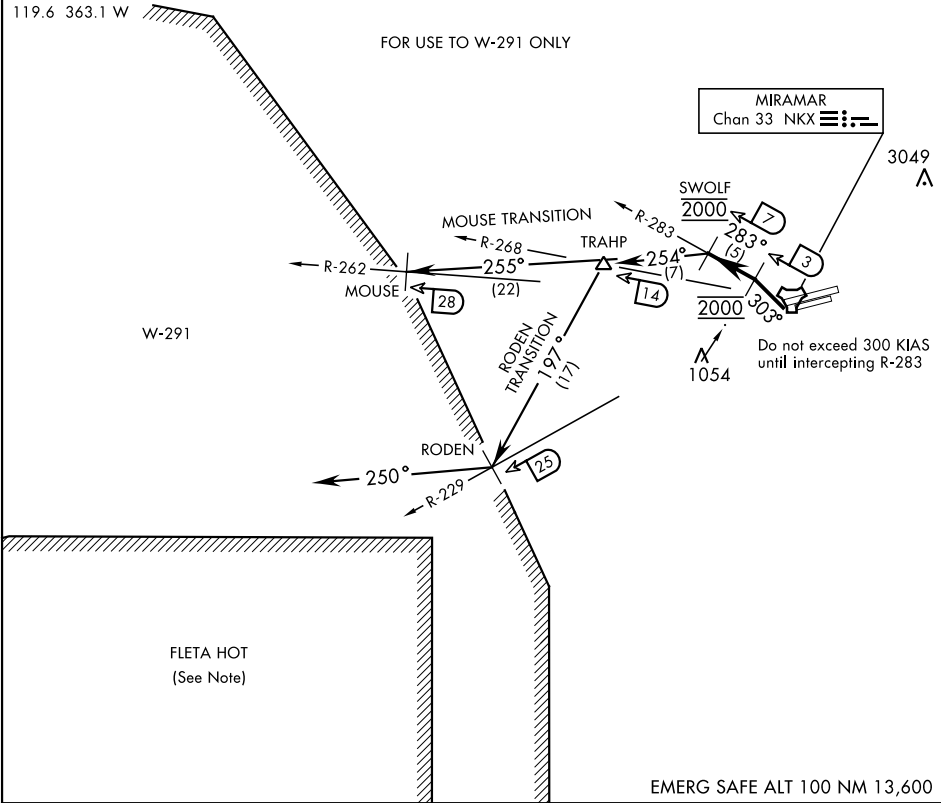


ATIS ★ 133.475 352.0	SHL-903 [USN]	Rwy	Knots	60	120	180	240	300	360
CLNC DEL		24L/R	V/V(fpm)	780	1560	2340	3120	3900	4680
125.975 254.325									
GND CON									
128.625 307.325									
FOSS TOWER ★									
135.2 298.925									
SOCAL DEP CON									
119.6 363.1 W									

ATC Climb Rate to 2000



▼

DEPARTURE ROUTE DESCRIPTION

TAKE-OFF RWY 24L/R: Climbing right turn to 2000 via heading 303° to intercept and proceed via NKX TACAN R-283 to SWOLF. Complete turn within NKX 2 DME. Cross NKX R-283/3 DME at 2000 mandatory. Maintain 2000 at SWOLF mandatory. Thence...

MOUSE TRANSITION (SWOLF9 • MOUSE): Turn left heading 255° to intercept NKX R-262 at MOUSE. Maintain 2000 for entry into W-291.

(Continued on next page)