

SAN DIEGO, CALIFORNIA

25107

RNAV (GPS) RWY 24R

WAAS CH 61450 W24B	APCH CRS 243°	Rwy Idg 12,000 TDZE 475 Arprt Elev 477
--------------------------	------------------	--

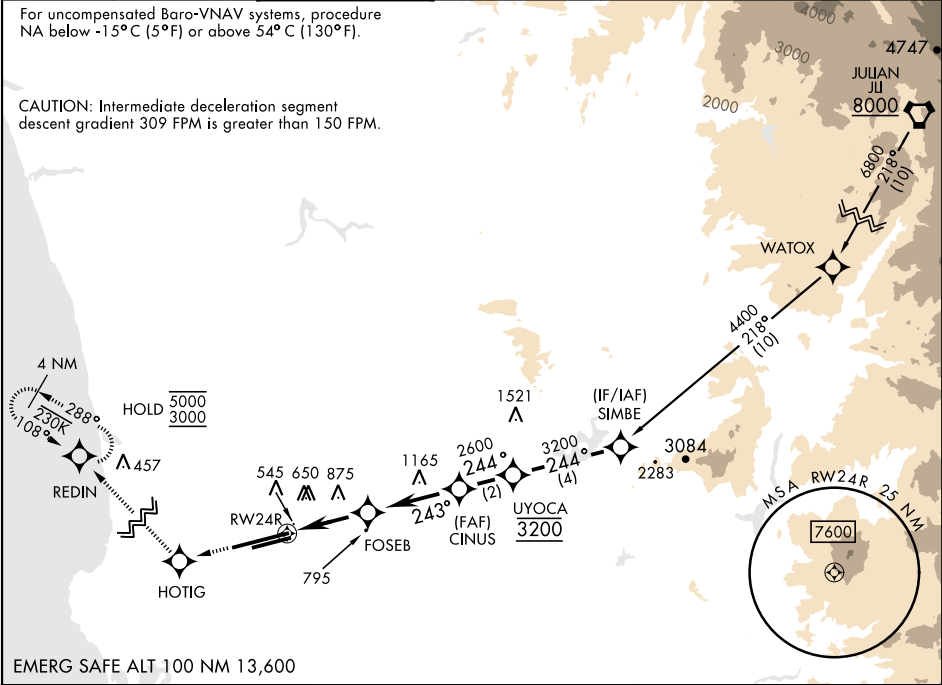
[USN]

MIRAMAR MCAS (JOE FOSS FLD) (KNKX)

RNP APCH ▼ ** When ALS inop, increase vis to ¾ mile. *** When ALS inop, increase vis to 1 mile, CAT CD vis to 1¾ miles.			ALSF-1 	MISSED APPROACH: Climb to 3000 direct HOTIG, 288° track to REDIN and hold.		
ATIS ★ 352.0 133.475	SOCAL APP CON 132.2 269.1	FOSS TOWER ★ 135.2 298.925 0	GND CON 128.625 307.325	CLNC DEL 125.975 254.325	LA CENTER 291.7	ASR/ PAR

For uncompensated Baro-VNAV systems, procedure NA below -15°C (5°F) or above 54°C (130°F).

CAUTION: Intermediate deceleration segment descent gradient 309 FPM is greater than 150 FPM.



EMERG SAFE ALT 100 NM 13,600

3000

↑

HOTIG

✧

REDIN

✧

VGSI and RNAV glidepath not coincident  
(VGSI Angle 3.00/TCH 57).

ELEV 477

TDZE 475

3000

↑

HOTIG

✧

REDIN

✧

VGSI and RNAV glidepath not coincident  
(VGSI Angle 3.00/TCH 57).

ELEV 477

TDZE 475

3000

↑

HOTIG

✧

REDIN

✧

VGSI and RNAV glidepath not coincident  
(VGSI Angle 3.00/TCH 57).

ELEV 477

TDZE 475

3000

↑

HOTIG

✧

REDIN

✧

VGSI and RNAV glidepath not coincident  
(VGSI Angle 3.00/TCH 57).

ELEV 477

TDZE 475

3000

↑

HOTIG

✧

REDIN

✧

VGSI and RNAV glidepath not coincident  
(VGSI Angle 3.00/TCH 57).

ELEV 477

TDZE 475

3000

↑

HOTIG

✧

REDIN

✧

VGSI and RNAV glidepath not coincident  
(VGSI Angle 3.00/TCH 57).

ELEV 477

TDZE 475

3000

↑

HOTIG

✧

REDIN

✧

VGSI and RNAV glidepath not coincident  
(VGSI Angle 3.00/TCH 57).

ELEV 477

TDZE 475

3000

↑

HOTIG

✧

REDIN

✧

VGSI and RNAV glidepath not coincident  
(VGSI Angle 3.00/TCH 57).

ELEV 477

TDZE 475

3000

↑

HOTIG

✧

REDIN

✧

VGSI and RNAV glidepath not coincident  
(VGSI Angle 3.00/TCH 57).

ELEV 477

TDZE 475

3000

↑

HOTIG

✧

REDIN

✧

VGSI and RNAV glidepath not coincident  
(VGSI Angle 3.00/TCH 57).

ELEV 477

TDZE 475

3000

↑

HOTIG

✧

REDIN

✧

VGSI and RNAV glidepath not coincident  
(VGSI Angle 3.00/TCH 57).

ELEV 477

TDZE 475

3000

↑

HOTIG

✧

REDIN

✧

VGSI and RNAV glidepath not coincident  
(VGSI Angle 3.00/TCH 57).

ELEV 477

TDZE 475

3000

↑

HOTIG

✧

REDIN

✧

VGSI and RNAV glidepath not coincident  
(VGSI Angle 3.00/TCH 57).

ELEV 477

TDZE 475

3000

↑

HOTIG

✧

REDIN

✧

VGSI and RNAV glidepath not coincident  
(VGSI Angle 3.00/TCH 57).

ELEV 477

TDZE 475

3000

↑

HOTIG

✧

REDIN

✧

VGSI and RNAV glidepath not coincident  
(VGSI Angle 3.00/TCH 57).

ELEV 477

TDZE 475

3000

↑

HOTIG

✧

REDIN

✧

VGSI and RNAV glidepath not coincident  
(VGSI Angle 3.00/TCH 57).

ELEV 477

TDZE 475

3000

↑

HOTIG

✧

REDIN

✧

VGSI and RNAV glidepath not coincident  
(VGSI Angle 3.00/TCH 57).

ELEV 477

TDZE 475

3000

↑

HOTIG

✧

REDIN

✧

VGSI and RNAV glidepath not coincident  
(VGSI Angle 3.00/TCH 57).

ELEV 477

TDZE 475

3000

↑

HOTIG

✧

REDIN

✧

VGSI and RNAV glidepath not coincident  
(VGSI Angle 3.00/TCH 57).

ELEV 477

TDZE 475

3000

↑

HOTIG

✧

REDIN

✧

VGSI and RNAV glidepath not coincident  
(VGSI Angle 3.00/TCH 57).

ELEV 477

TDZE 475

3000

↑

HOTIG

✧

REDIN

✧

VGSI and RNAV glidepath not coincident  
(VGSI Angle 3.00/TCH 57).

ELEV 477

TDZE 475

3000

↑

HOTIG

✧

REDIN

✧

VGSI and RNAV glidepath not coincident  
(VGSI Angle 3.00/TCH 57).

ELEV 477

TDZE 475

3000

↑

HOTIG

✧

REDIN

✧

VGSI and RNAV glidepath not coincident  
(VGSI Angle 3.00/TCH 57).

ELEV 477

TDZE 475

3000

↑

HOTIG

✧

REDIN

✧

VGSI and RNAV glidepath not coincident  
(VGSI Angle 3.00/TCH 57).

ELEV 477

TDZE 475

3000

↑

HOTIG

✧

REDIN

✧

VGSI and RNAV glidepath not coincident  
(VGSI Angle 3.00/TCH 57).

ELEV 477

TDZE 475

3000

↑

HOTIG

✧

REDIN

✧

VGSI and RNAV glidepath not coincident  
(VGSI Angle 3.00/TCH 57).

ELEV 477

TDZE 475

3000

↑

HOTIG

✧

REDIN

✧

VGSI and RNAV glidepath not coincident  
(VGSI Angle 3.00/TCH 57).

ELEV 477

TDZE 475

3000

↑

HOTIG

✧

REDIN

✧

VGSI and RNAV glidepath not coincident  
(VGSI Angle 3.00/TCH 57).

ELEV 477

TDZE 475

3000

↑

HOTIG

✧

REDIN

✧

VGSI and RNAV glidepath not coincident  
(VGSI Angle 3.00/TCH 57).

ELEV 477

TDZE 475

3000

↑

HOTIG

✧

REDIN

✧

VGSI and RNAV glidepath not coincident  
(VGSI Angle 3.00/TCH 57).

ELEV 477

TDZE 475

3000

↑

HOTIG

✧

REDIN

✧

VGSI and RNAV glidepath not coincident  
(VGSI Angle 3.00/TCH 57).

ELEV 477

TDZE 475

3000

↑

HOTIG

✧

REDIN

✧

VGSI and RNAV glidepath not coincident  
(VGSI Angle 3.00/TCH 57).

ELEV 477

TDZE 475

3000

↑

HOTIG

✧

REDIN

✧

VGSI and RNAV glidepath not coincident  
(VGSI Angle 3.00/TCH 57).

ELEV 477

TDZE 475

3000

↑

HOTIG

✧

REDIN

✧

VGSI and RNAV glidepath not coincident  
(VGSI Angle 3.00/TCH 57).

ELEV 477

TDZE 475

3000

↑

HOTIG

✧

REDIN

✧

VGSI and RNAV glidepath not coincident  
(VGSI Angle 3.00/TCH 57).

ELEV 477

TDZE 475

3000

↑

HOTIG

✧

REDIN

✧

VGSI and RNAV glidepath not coincident  
(VGSI Angle 3.00/TCH 57).

ELEV 477

TDZE 475

3000

↑

HOTIG

✧

REDIN

✧

VGSI and RNAV glidepath not coincident  
(VGSI Angle 3.00/TCH 57).

ELEV 477

TDZE 475

3000

↑

HOTIG

✧

REDIN

✧

VGSI and RNAV glidepath not coincident  
(VGSI Angle 3.00/TCH 57).

ELEV 477

TDZE 475

3000

↑

HOTIG

✧

REDIN

✧

VGSI and RNAV glidepath not coincident  
(VGSI Angle 3.00/TCH 57).

ELEV 477

TDZE 475

3000

↑

HOTIG

✧

REDIN

✧

VGSI and RNAV glidepath not coincident  
(VGSI Angle 3.00/TCH 57).

ELEV 477

TDZE 475

3000

↑

HOTIG

✧

REDIN

✧

VGSI and RNAV glidepath not coincident  
(VGSI Angle 3.00/TCH 57).

ELEV 477

TDZE 475

3000

↑

HOTIG

✧

REDIN

✧

VGSI and RNAV glidepath not coincident  
(VGSI Angle 3.00/TCH 57).

ELEV 477

TDZE 475

3000

↑

HOTIG

✧

REDIN

✧

VGSI and RNAV glidepath not coincident  
(VGSI Angle 3.00/TCH 57).

ELEV 477

TDZE 475

3000

↑

HOTIG

✧

REDIN

✧

VGSI and RNAV glidepath not coincident  
(VGSI Angle 3.00/TCH 57).

ELEV 477

TDZE 475

3000

↑

HOTIG

✧

REDIN

✧

VGSI and RNAV glidepath not coincident  
(VGSI Angle 3.00/TCH 57).

ELEV 477

TDZE 475

3000

↑

HOTIG

✧

REDIN

✧

VGSI and RNAV glidepath not coincident  
(VGSI Angle 3.00/TCH 57).

ELEV 477

TDZE 475

3000

↑

HOTIG

✧

REDIN

✧

VGSI and RNAV glidepath not coincident  
(VGSI Angle 3.00/TCH 57).

ELEV 477

TDZE 475

3000

↑

HOTIG

✧

REDIN

✧

VGSI and RNAV glidepath not coincident  
(VGSI Angle 3.00/TCH 57).

ELEV 477

TDZE 475

3000

↑

HOTIG

✧

REDIN

✧

VGSI and RNAV glidepath not coincident  
(VGSI Angle 3.00/TCH 57).

ELEV 477

TDZE 475

3000

↑

HOTIG

✧

REDIN

✧

VGSI and RNAV glidepath not coincident  
(VGSI Angle 3.00/TCH 57).

ELEV 477

TDZE 475

3000

↑

HOTIG

✧

REDIN

✧

VGSI and RNAV glidepath not coincident  
(VGSI Angle 3.00/TCH 57).

ELEV 477

TDZE 475

3000

↑

HOTIG

✧

REDIN

✧

VGSI and RNAV glidepath not coincident  
(VGSI Angle 3.00/TCH 57).

ELEV 477

TDZE 475

3000

↑

HOTIG

✧

REDIN

✧

VGSI and RNAV glidepath not coincident  
(VGSI Angle 3.00/TCH 57).

ELEV 477

TDZE 475

3000

↑

HOTIG

✧

REDIN

✧

VGSI and RNAV glidepath not coincident  
(VGSI Angle 3.00/TCH 57).

ELEV 477

TDZE 475

3000

↑

HOTIG

✧

REDIN

✧

VGSI and RNAV glidepath not coincident  
(VGSI Angle 3.00/TCH 57).

ELEV 477

TDZE 475

3000

↑

HOTIG

✧

REDIN

✧

VGSI and RNAV glidepath not coincident  
(VGSI Angle 3.00/TCH 57).

ELEV 477

TDZE 475

3000

↑

HOTIG

✧

REDIN

✧

VGSI and RNAV glidepath not coincident  
(VGSI Angle 3.00/TCH 57).

ELEV 477

TDZE 475

3000

↑

HOTIG

✧

REDIN

✧

VGSI and RNAV glidepath not coincident  
(VGSI Angle 3.00/TCH 57).

ELEV 477

TDZE 475

3000

↑

HOTIG

✧

REDIN

✧

VGSI and RNAV glidepath not coincident  
(VGSI Angle 3.00/TCH 57).

ELEV 477

TDZE 475

3000

↑

HOTIG

✧

REDIN

✧

VGSI and RNAV glidepath not coincident  
(VGSI Angle 3.00/TCH 57).

ELEV 477

TDZE 475

3000

↑

HOTIG

✧

REDIN

✧

VGSI and RNAV glidepath not coincident  
(VGSI Angle 3.00/TCH 57).

ELEV 477

TDZE 475

3000

↑

HOTIG

✧

REDIN

✧

VGSI and RNAV glidepath not coincident  
(VGSI Angle 3.00/TCH 57).

ELEV 477

TDZE 475

3000

↑

HOTIG

✧

REDIN

✧

VGSI and RNAV glidepath not coincident  
(VGSI Angle 3.00/TCH 57).

ELEV 477

TDZE 475

3000

↑

HOTIG

✧

REDIN

✧

VGSI and RNAV glidepath not coincident  
(VGSI Angle 3.00/TCH 57).

ELEV 477

TDZE 475

3000

↑

HOTIG

✧

REDIN

✧

VGSI and RNAV glidepath not coincident  
(VGSI Angle 3.00/TCH 57).

ELEV 477

TDZE 475

3000

↑

HOTIG

✧

REDIN

✧

VGSI and RNAV glidepath not coincident  
(VGSI Angle 3.00/TCH 57).

ELEV 477

TDZE 475

3000

↑

HOTIG

✧

REDIN

✧

VGSI and RNAV glidepath not coincident  
(VGSI Angle 3.00/TCH 57).

ELEV 477

TDZE 475

3000

↑

HOTIG

✧

REDIN

✧

VGSI and RNAV glidepath not coincident  
(VGSI Angle 3.00/TCH 57).

ELEV 477

TDZE 475

3000

↑

HOTIG

✧

REDIN

✧

VGSI and RNAV glidepath not coincident  
(VGSI Angle 3.00/TCH 57).

ELEV 477

TDZE 475

3000

↑

HOTIG

✧

REDIN

✧

VGSI and RNAV glidepath not coincident  
(VGSI Angle 3.00/TCH 57).

ELEV 477

TDZE 475

3000

↑

HOTIG

✧

REDIN

✧

VGSI and RNAV glidepath not coincident  
(VGSI Angle 3.00/TCH 57).

ELEV 477

TDZE 475

3000

↑

HOTIG

✧

REDIN

✧

VGSI and RNAV glidepath not coincident  
(VGSI Angle 3.00/TCH 57).

ELEV 477

TDZE 475

3000

↑

HOTIG

✧

REDIN

✧

VGSI and RNAV glidepath not coincident  
(VGSI Angle 3.00/TCH 57).

ELEV 477

TDZE 475

3000

↑

HOTIG

✧

REDIN

✧

VGSI and RNAV glidepath not coincident  
(VGSI Angle 3.00/TCH 57).

ELEV 477

TDZE 475

3000

↑

HOTIG

✧

REDIN

✧

VGSI and RNAV glidepath not coincident  
(VGSI Angle 3.00/TCH 57).

ELEV 477

TDZE 475

3000

↑

HOTIG

✧

REDIN

✧

VGSI and RNAV glidepath not coincident  
(VGSI Angle 3.00/TCH 57).

ELEV 477

TDZE 475

3000

↑

HOTIG

✧

REDIN

✧

VGSI and RNAV glidepath not coincident  
(VGSI Angle 3.00/TCH 57).

ELEV 477

TDZE 475

3000

↑

HOTIG

✧

REDIN

✧

VGSI and RNAV glidepath not coincident  
(VGSI Angle 3.00/TCH 57).

ELEV 477

TDZE 475

3000

↑

HOTIG

✧

REDIN

✧

VGSI and RNAV glidepath not coincident  
(VGSI Angle 3.00/TCH 57).

ELEV 477

TDZE 475

3000

↑

HOTIG

✧

REDIN

✧

VGSI and RNAV glidepath not coincident  
(VGSI Angle 3.00/TCH 57).

ELEV 477

TDZE 475

3000

↑

HOTIG

✧

REDIN

✧

VGSI and RNAV glidepath not coincident  
(VGSI Angle 3.00/TCH 57).

ELEV 477

TDZE 475

3000

↑

HOTIG

✧

REDIN

✧

SAN DIEGO, CALIFORNIA

32°52'N-117°09'W

MIRAMAR MCAS (JOE FOSS FLD) (KNKX)

Amtdt 4 27JAN22

RNAV (GPS) RWY 24R

SW-3, 10 JUL 2025 to 07 AUG 2025

SW-3, 10 JUL 2025 to 07 AUG 2025