

SAN DIEGO, CALIFORNIA

25107

RNAV (GPS) RWY 24L

WAAS CH 54028 W24A	APCH CRS 243°	Rwy Idg TDZE Arpt Elev	8001 477 477
--------------------------	------------------	------------------------------	--------------------

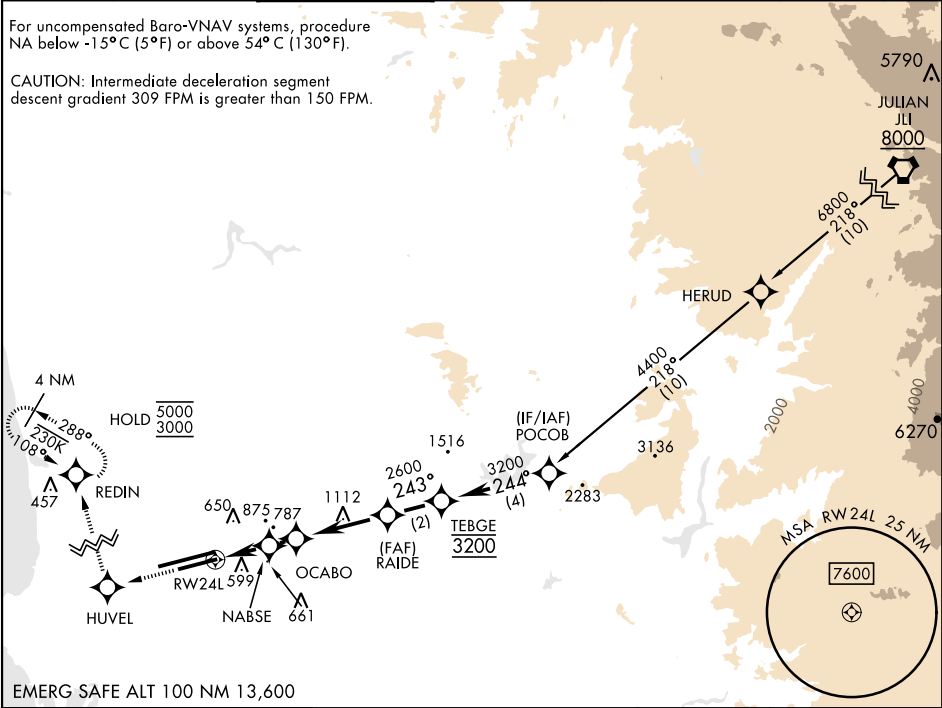
[USN]

MIRAMAR MCAS (JOE FOSS FLD) (KNKX)

RNP APCH		MISSED APPROACH: Climb to 3000 direct HUVEL, 288° track to REDIN and hold.			
ATIS ★ 133.475 352.0	SOCAL APP CON 132.2 269.1	FOSS TOWER ★ 135.2 298.925 0	GND CON 128.625 307.325	CLNC DEL 125.975 254.325	LA CENTER 291.7 ASR/ PAR

For uncompensated Baro-VNAV systems, procedure NA below -15°C (5°F) or above 54°C (130°F).

CAUTION: Intermediate deceleration segment descent gradient 309 FPM is greater than 150 FPM.



EMERG SAFE ALT 100 NM 13,600

3000 ↑		HUVEL ✦	REDIN ↗ tr 288°	ELEV 477		TDZE 477

SAN DIEGO, CALIFORNIA

32°52'N-117°09'W

MIRAMAR MCAS (JOE FOSS FLD) (KNKX)

Amtd 4 27JAN22

RNAV (GPS) RWY 24L

SW-3, 10 JUL 2025 to 07 AUG 2025

SW-3, 10 JUL 2025 to 07 AUG 2025