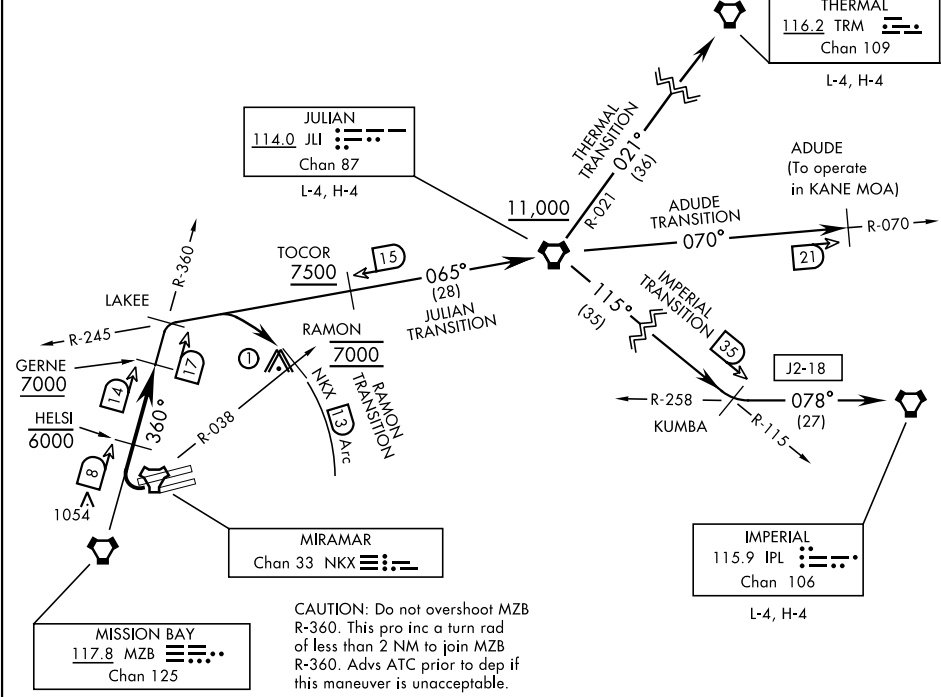


ATIS ★ 133.475 352.0	AL-903 [USN]	Rwy	Knots	60	120	180	240	300	360
CLNC DEL		* 24L/R ⓐ	V/V(fpm)	260	520	780	1040	1300	1560
125.975 254.325		** 24L/R ⓑ	V/V(fpm)	280	560	840	1120	1400	1680
GND CON		† 24L/R ⓒ	V/V(fpm)	678	1356	2034	2712	3390	4068
128.625 307.325		‡ 24L/R ⓓ	V/V(fpm)	235	470	705	940	1175	1410
FOSS TOWER ★									
135.2 298.925									
SOCAL DEP CON									
132.2 269.1 E									

*Military Minimum ** Civil Minimum † ATC Climb Rate

ⓐ to 3600 ⓒ to 7000

ⓑ to 3800 ⓓ 7500 to 11,000



EMERG SAFE ALT 100 NM 13,600

① 3018' Twr 12.5 NM from DER.

▼

DEPARTURE ROUTE DESCRIPTION

TAKEOFF RWY 24L/R: Turn right to intercept and proceed via MZB VORTAC R-360 to LAKEE INT. Cross HELSI at or below 6000. Cross GERNE at or above 7000. Thence...

ADUDE TRANSITION (LAKEE3 • ADUDE): Via JLI VORTAC R-245 to JLI. Then via JLI R-070 to ADUDE. Cross TOCOR at or above 7500. Cross JLI VORTAC at or above 11,000. (To operate in KANE MOA.)

IMPERIAL TRANSITION (LAKEE3 • IPL): Via JLI VORTAC R-245 to JLI. Then via JLI R-115 to KUMBA INT, then via IPL VORTAC R-258 to IPL. Cross TOCOR at or above 7500. Cross JLI VORTAC at or above 11,000.

(Continued on next page)