


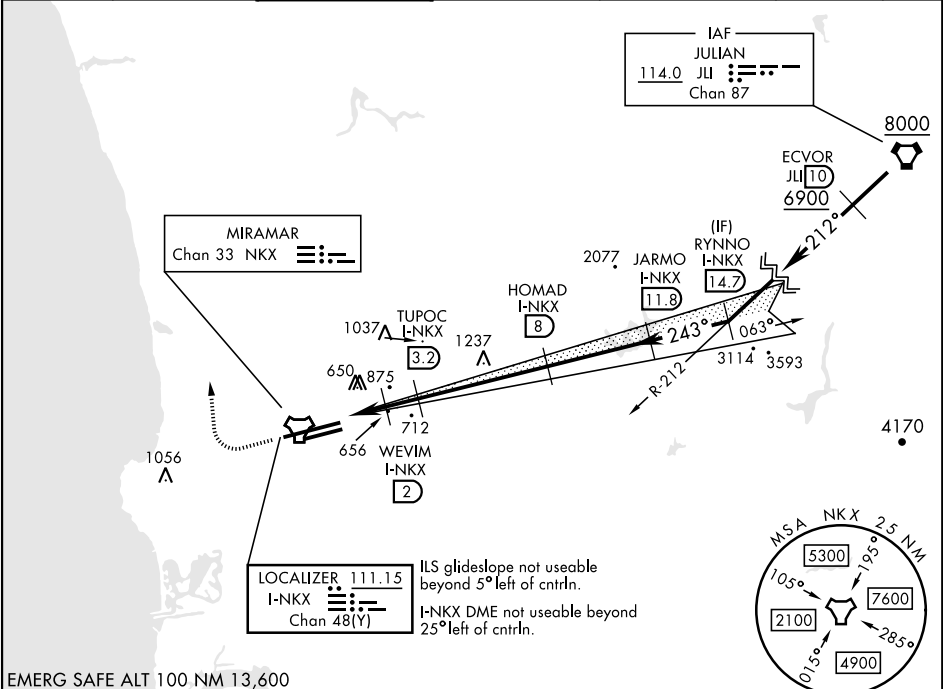
SAN DIEGO, CALIFORNIA

LOC/DME I-NKX 111.15 Chan 48(Y)	APCH CRS 243°	Rwy Idg 8001	24L 24R 12,000 475
		TDZE 477	477
		Arpt Elev 477	477

ILS Z or LOC/DME Z RWY 24R

[USN] MIRAMAR MCAS (JOE FOSS FLD) (KNKX)

DME and RADAR required			ALSF-1 	MISSED APPROACH: Climb to 1500, then climbing right turn to 3000 via heading 340°. Expect radar vectors.		
▼ ** When ALS inop, increase vis to ¾ mile. ** When ALS inop, increase CAT AB vis to 1 mile, CAT CDE vis to 1 ½ miles. *** CAT E circling not authorized S of Rwy 6R-24L.						
ATIS ★ 133.475 352.0	SOCAL APP CON 132.2 269.1	FOSS TOWER ★ 135.2 298.925 0	GND CON 128.625 307.325	CLNC DEL 125.975 254.325	LA CENTER 291.7	ASR/ PAR



EMERG SAFE ALT 100 NM 13,600

1500

↑

3000

hdg
340°

VGSI and descent angles not coincident.

CATEGORY	A		B		C	D	E
S-ILS 24R*	675 - ½				200	(200- ½)	
S-LOC/ DME 24R**	920- ½	445 (500- ½)	920- ¾	445 (500- ¾)			
SIDESTEP 24L	920-1	443 (500-1)	920-1 ½ 443 (500-1 ½)	920-2 443 (500-2)			
CIRCLING***	940-1 463 (500-1)	960-1 483 (500-1)	960-1 ½ 483 (500-1 ½)	1180-2 ¼ 703 (800-2 ¼)	1360-3 883 (900-3)		

ELEV 477

TDZE 24L 477

TDZE 24R 475

HIRL Rwy 6L-24R

HIRL Rwy 6R-24L

SAN DIEGO, CALIFORNIA

32° 52' N - 117° 09' W

MIRAMAR MCAS (JOE FOSS FLD) (KNKX)

Amtd 1 29DEC22

ILS Z or LOC/DME Z RWY 24R

SW-3, 10 JUL 2025 to 07 AUG 2025

SW-3, 10 JUL 2025 to 07 AUG 2025