

SAN DIEGO, CALIFORNIA

LOC/DME I-NKX 111.15 Chan 48 (Y)	APCH CRS 243°	Rwy Idg 8001 TDZE 477 Arpt Elev 477	24L 12,000 475 477	24R
--	-------------------------	--	---	-----

ILS Y or LOC/DME Y RWY 24R

[USN]

MIRAMAR MCAS (JOE FOSS FLD) (KNKX)

TACAN or RADAR required

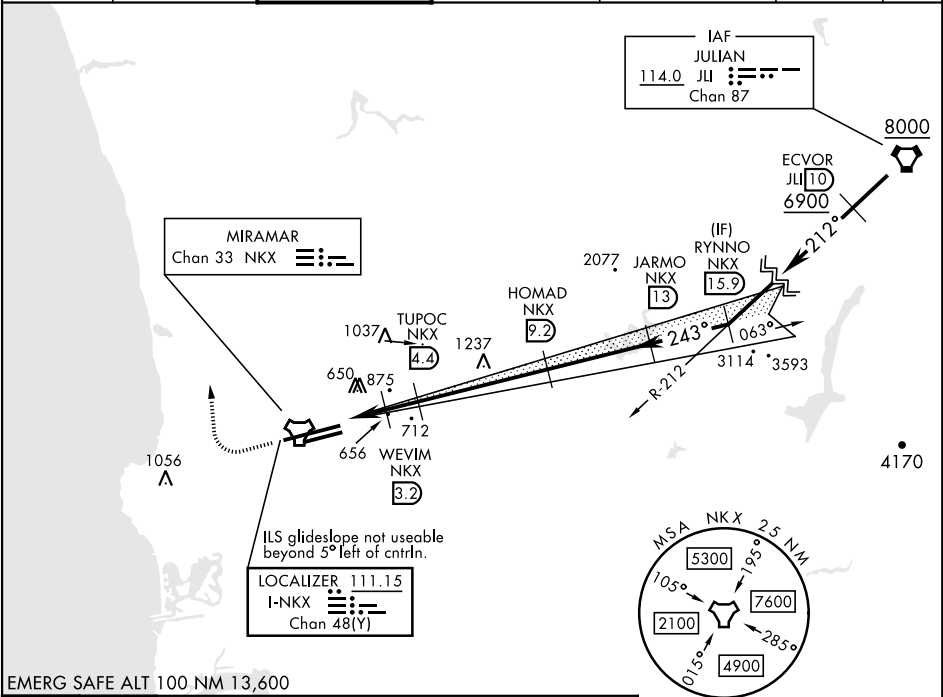
- * When ALS inop, increase vis to ¾ mile.
- ** When ALS inop, increase CAT AB vis to 1 mile, CAT CDE vis to 1 ¾ miles.
- *** CAT E circling not authorized S of Rwy 6R-24L.

ALSF-1

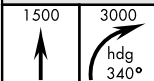


MISSED APPROACH: Climb to 1500, then climbing right turn to 3000 via heading 340°. Expect radar vectors.

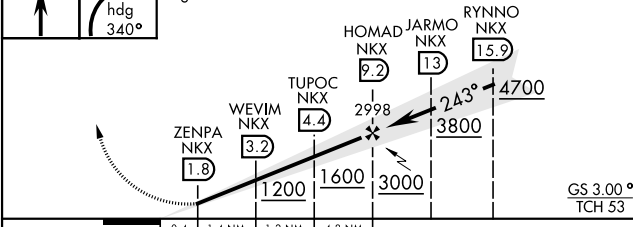
ATIS ★ 133.475 352.0	SOCAL APP CON 132.2 269.1	FOSS TOWER ★ 135.2 298.925	GND CON 128.625 307.325	CLNC DEL 125.975 254.325	LA CENTER 291.7	ASR/ PAR
--	---	--	---	--	---------------------------	-------------



EMERG SAFE ALT 100 NM 13,600



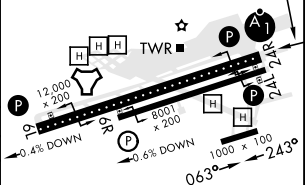
VCSI and descent angles not coincident.



ELEV 477

TDZE 24L 477
TDZE 24R 475

CATEGORY	A	B	C	D	E
S-ILS 24R*	675 - ½		200	(200 - ½)	
S-LOC/DME 24R**	920 - ½	445 (500 - ½)	920 - ¾	445 (500 - ¾)	
SIDESTEP 24L	920-1	443 (500-1)	920-1 ½ 443 (500-1 ½)	920-2 443 (500-2)	1360-3
CIRCLING***	940-1 463 (500-1)	960-1 483 (500-1)	960-1 ½ 483 (500-1 ½)	1180-2 ¼ 703 (800-2 ¼)	1360-3 883 (900-3)



HIRL Rwy 6L-24R
HIRL Rwy 6R-24L

SAN DIEGO, CALIFORNIA

32°52'N-117°09'W

MIRAMAR MCAS (JOE FOSS FLD) (KNKX)

Orig 14JUL22

ILS Y or LOC/DME Y RWY 24R

SW-3, 10 JUL 2025 to 07 AUG 2025

SW-3, 10 JUL 2025 to 07 AUG 2025