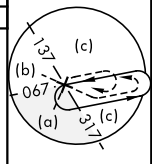


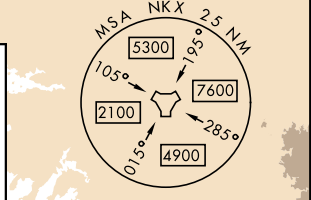
**MISSED APPROACH:** Climb to 1500, then climbing right turn to 7000 via NKX TACAN R-003 to HUKVO. Arc NE of NKX via 16 mile arc to WARNT and hold. Cross R-323 at 3000 mandatory, cross HUKVO at 6000 mandatory.




Knots	60	120	180	240	300	360
V/V(fpm)	275	550	825	1100	1375	1650

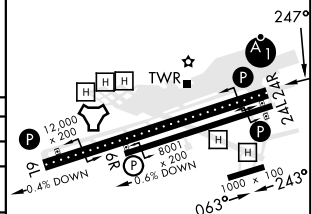
ATC climb of 275 ft/NM to 6000



VGSI and descent angles not coincident.



				
CATEGORY	C		D	E
S-24R*	1140-1½ 663 (700-1½)			
SIDESTEP 24L	1140-1⅞ 663 (700-1⅞)	1140-2 663 (700-2)	1140-2¼ 663 (700-2¼)	
CIRCLING**	1140-1⅞ 663 (700-1⅞)	1180-2¼ 703 (800-2¼)	1360-3 883 (900-3)	



MIRAMAR MCAS (JOE FOSS FLD) (KNKX)

## HI-TACAN Z RWY 24R